



Telephone 01454 300 900

April/May 2021

Community Bradley Stoke Matters

Bradley Stoke & Little Stoke Gifford Community Matters is delivered to 15,000 DIFFERENT homes across the whole Five Stokes Area



**Meadowbrook
School launches
new campaign for
safer parking**



SPARKY'S

Driving skool

- 15 years experience • High pass rate
- Fast track tests • Intensive courses
- Help with theory tests
- Calm friendly instruction • Dual controls
- Making driving fun!
- Whole Bristol area covered
- Payment options Available

Call Mark on:

07908 425 054

Alpine Landscaping

Established Family Firm with over 30 years' experience

Senior Citizens Special Rates

- Garden Clearance - Regular or One Off • Patios • Fencing • Tree Work • Turfing
- Hedgecutting • Planting (Shrubs etc) • Organic Manure Delivered - Also applied
- Professional and Guarantee Work • Brick and Blocklaying

Call Joe for a Free Quote 0117 959 2143 / 07891 253 122

www.alpine-landscaping.co.uk

25% Off
with this advert!

Celebrating 16 years in the community 2005-2021

EASTER EGG HUNT

Fri 2nd April - Fri 16th April

Can you help the Easter Bunny find letters hidden in
Easter eggs around Bradley Stoke
to spell out an Easter message?



All proceeds from this event will support:



Trail Maps £2 available online
www.thebrightwell.org.uk

All completed trail forms will win a chocolate egg.
Each entry will be put into a prize draw to win more Easter treats.

Dear Readers....

With the clocks leaping forward at the end of March, Spring is truly upon us. It is great to feel like we are finally making progress with emerging cautiously out of lockdown this month. Many of our outdoor sports clubs can resume activities from the end of March and we include updates from BSTFC, St Mary's Old Boys and South Glos Hockey who are all looking forward to finally getting out and playing their respective sports once again. Who could have foreseen the last 12 months when we first went into lockdown at the end of March last year!

We have news of a couple of Easter activities taking place - see opposite and also on page 5 - and the Churches are doing their best to offer on-line Easter services as we see our second Easter in lockdown!

We have all kinds of other news and updates for you in our pages this edition, from the Rotary Club - have you seen their newly planted crocus wheel looking lovely in full bloom? Updates from some of the local schools; an interesting article on successful women in science; news from Bradley Stoke in Bloom and an article regarding Oxygen Therapy available at the Brightwell. We also share an article on why it is not ok to feed the local horses you might see out on your walks. Doing just this tragically cost one local pony its life earlier this year.

We have news and events from the Winterbourne Barn and our local girl guiding troops celebrating World Thinking Day and "Wishing you a world of Peace" by putting up posters and decorating a local tree.

Per our front cover we also bring your attention to safe parking around our local primary schools.

Enjoy the read!!

Jaci x

Contact Us :

01454 300 900

sales@mattersmagazines.co.uk

community@mattersmagazines.co.uk

www.bradleystokematters.co.uk

Matters Magazines Ltd, 130 Aztec West, BS32 4UB
Co Regn No: 8490434

The Bradley Stoke, Little Stoke and Stoke Gifford community matters magazines are independently published and delivered FREE to homes (c 16,000 copies) in Bradley Stoke, Little Stoke, Stoke Gifford, Stoke Lodge and the edges of Patchway (to the A38 border) and Harry Stoke. The views and opinions expressed are not necessarily those of the editor (unless it is a personal review of a service that we have participated in). We cannot vouch for every advertiser personally (although since starting in August of 2005 we have used many of the services ourselves). Any feedback or experience is welcomed.

We would like to thank all the advertisers who support this publication and therefore make it possible. Please return their support by utilising their services when and where you can. It is the advertiser's responsibility to ensure conformity with the Trade Descriptions Act 1975, Business Advertisements Disclosure Order 1977, Sex Discriminations Act 1975 and the Consumer Credit Act 1974. We cannot be held responsible for misrepresentations in the adverts included.

All artwork created by us must not be published in any other media without our permission. © Matters Magazines Ltd 2005...2021

If you are a business looking to promote your services across the Stokes in 2021 do get in touch with us and we will be happy to help.

Deadline for the June edition is 12th May.

DON'T FORGET YOU CAN KEEP UP WITH EACH EDITION OF YOUR FAVOURITE COMMUNITY MAGAZINE VIA

www.bradleystokematters.co.uk



Bradley Stoke Rubbish Clearance Licensed waste carrier

- We load and clear • Same day service
- Single item jobs • Cheaper than a skip • No VAT
- Household, Garden, Garage and Shed cleared



Contact Stuart or Sue on
0800 0234 995
(Freephone) or
07770 944727
stuart.thistlewood@yahoo.co.uk

THE AERIAL MAN

TV Aerial and Satellite Specialist
Affordable Prices - Reliable Service

- Digital Aerials • Fully Guaranteed • Repairs
- Sky Work • Free Quotes • OAP Discounts
- Poor Reception Problems • Additional TV Points
- Humax Recorders • TV Sales

Freesat
01454 660 046
07818 413 451



www.theaerialman.co.uk



FIND US ON FACEBOOK:

Bradley Stoke & Little Stoke Gifford Matters - Facebook/BSMatters



Stoke Lodge
Primary School

*We pride ourselves on the wide range of curriculum opportunities and approaches that we employ in order to ensure our learners **STAY CURIOUS**, are prepared for the next phase of their educational career and for life in general.*

Facebook @StokeLodgePrimary
Instagram @Stoke_Lodge

For more information visit:
stokelodgeschool.co.uk



Easter in Bradley Stoke ...

As we mark the passing of a year since the introduction of the first lockdown we are preparing for our second, very different Easter.

Thankfully, we are in a more hopeful place as a nation than this time last year – we understand more about the virus, treatments have been developed and crucially the vaccine rollout is offering a level of protection. But we are not out of the woods and, sadly, churches will not be able to gather in the numbers that we normally associate with this season.

That doesn't mean that our celebrations will be muted!

EASTER COMES WITH



Visit a local church online this Easter

bsec.org.uk
ctkchurch.org.uk
citychurch.org.uk
htcbradleystoke.co.uk

from Rev Rod Symmons

Easter is about hope – not just optimism about passing the worst of the impact of COVID, but a deeper hope that transforms our lives even in the midst of a pandemic.

For all of us in Bradley Stoke, the last year has brought unforeseen suffering. Some have lost loved ones, others have faced illness themselves or have endured serious financial losses.

Easter reminds us that God stands with us in our suffering and has opened up a pathway to life beyond the grave. Easter comes with Hope!

This year the churches of Bradley Stoke – Bradley Stoke Evangelical Church, Christ the King, City Church and Holy Trinity – would love you to join us at one of our Easter services online. (Details of our websites are on the image below left).

And we would like to wish all the readers of Bradley Stoke Matters a happy and hope-filled Easter!



Winterbourne
Academy

Our aim is to ensure the academic, personal and social development of every student in our care so that they move to the next stage of their lives ready to succeed in whatever path they choose.

Facebook @WAsocialmedia
Instagram @WinterbourneAc1

For more information visit:
winterbourneacademy.org.uk



Easter Family Fun!

Keep your kids busy in the fresh air over the Easter holidays by joining in the hunt for some letters hidden in Easter eggs around Bradley Stoke.

Following a trail map, you will need to collect the letters displayed on each egg which will spell out an Easter message. Once you have solved the puzzle, return your trail map and enjoy a yummy chocolate egg. Each completed form will be entered into a prize draw to win even more Easter treats!!

All proceeds from the Easter egg hunt will be donated to The Brightwell in Bradley Stoke, a charity which provides therapies and support to local people living with neurological conditions such as Multiple Sclerosis, Fibromyalgia, Stroke, Chronic Fatigue and Cerebral Palsy.

After a very difficult year when all our events were cancelled owing to Covid-19, your support is greatly appreciated.

Trail maps will be available to download online at www.thebrightwell.org.uk from Monday 29th March.

For further information, please contact claire.wingate@thebrightwell.org.uk



Your Village Shop raises £500 for South West Dementia Brain Bank while continuing to delight customers with deliveries throughout lockdown

Your Village Shop is an independent shop based in Stoke Gifford Retirement Village. It was established in March 2020 by husband and wife Lucy & Richard who set out to create a dementia friendly community store.

During the first year the team and residents at Your Village Shop have already raised £500 for a charity based in Southmead Hospital that has missed out on donations during the pandemic. Lucy explains "South West Dementia Brain Bank carries out vital work to support worldwide research into Dementia and is a little known charity within our community; £500 will make a huge difference to them."

Your Village Shop continues to provide a delivery service to the local community which helps with their fundraising, Lucy tells us "One of the ways in which we have been raising funds for South West Dementia Brain Bank is through the sales of our delicious own brand products in hampers and gifts. Customers give us great feedback when we deliver to their families or to teachers and key workers as a thank you for their work."

If you would like to find out more about Your Village Shop visit their website yourvillageshop.com where you will find out about the range of products on offer and can order through their online shop. You can also find them on facebook @yourvillageshop





#Stop Feeding Our Horses



Over the past year, restrictions to our movement and activities available to us has encouraged people to explore new local walks and enjoy the countryside available to us. Many rural walks involve public rights of way through fields or on

footpaths that run alongside them. Horses are often grazing in such areas, and although it is wonderful to observe these beautiful creatures, we would like to raise awareness about the dangers (often fatal) to the animals if we feed them.

We were contacted by a local resident, who sadly lost a pony they had on loan due to walkers feeding the mare. They discovered Roxy, the pony eating parts of a chicken sandwich with salad, including onion that had been thrown over the fence. Although the pony was put under immediate veterinary care, over the days that followed the poor mare did not recover and the devastating decision was made to put her to sleep. Onions are toxic to horses and it was the vet's opinion that this was the cause of death of an otherwise healthy equine. Sadly, this is not an isolated case and increasing incidents such as these has led to a nationwide campaign #Stop Feeding Our Horses.

Horses have a one-way digestion system that means they cannot be sick, so unlike dogs, you cannot force them to bring back up any foreign bodies they pick up. Their stomachs are also extremely sensitive and foods that are completely harmless to us can be toxic to them. Even foods you associate with horses such as apples and carrots can contain too much sugar for some horses or easily get lodged in their throat and

lead to horses choking. The fermentation process of freshly cut grass can cause them to colic, which can be life threatening. Like humans, horses can have allergies or diabetes and require special diets to maintain their health.

It has been a wet winter and fields are looking muddy and bare of grass; this is not something for anyone to be alarmed about when out walking, rest assured the horses will be receiving hay at least twice a day and an appropriate bucket feed. If you see a horse in distress, alert the nearest farm/yard or check for a sign with owner's detail on.

Feeding horses is an offence under the Welfare Act 2006 and person(s) responsible could be liable for prosecution.

We always try to share positive news at Matters Magazines but the safety of horses is something we feel passionate about. We understand people feeding animals when out on their walk are trying to be kind but sadly, sometimes kindness can kill and we must resist the urge. As a parent, I would not under any circumstances be happy about a stranger giving my children food – even if they were keen to have it! We hope everyone who reads this will take some positive action in informing others; the message is simple, **'Please do not ever feed horses that are not under your care, adore them from a far'.**

If you would like to find out more, you can visit the British Horse Society page bhs.org.uk/behorseaware where cautionary posters can be downloaded to display in fields if you are a horse/land owner.

If you would like to show your support the campaign and help bring this issue to the fore – join the **Facebook page: Stop Feeding Our Horses.**

DREAMING OF A NEW KITCHEN?

CALL FOR LATEST UPDATES ON SURVEYS AND APPOINTMENTS



DREAM DOORS®
NEW LIFE FOR OLD KITCHENS

THE UK'S #1
KITCHEN MAKEOVER EXPERTS

- Trusted reputation
- Huge choice of doors, worktops appliances, sinks & taps
- Free planning & design service
- Door swaps to full kitchens - tailored to your needs

www.dreamdoors.co.uk

11/12 The Promenade,
Gloucester Rd,
Bristol BS7 8AL



Call for a free estimate on:
0117 944 3223

Checkatrade.com
Where reputation matters
AVERAGE SCORE **9.8/10**



Rotary Club Update by Phil King

We've been a bit quiet lately, so here's a quick breakdown of some of the stuff Bradley Stoke Rotary Club has been doing over lockdown:

- We donated some cash to the North Bristol Food bank
- Some members were also involved in the packing of food parcels at Ashton Gate last year and are still helping to deliver food parcels/doing the wholesaler run in association with the Matthew Tree Project.
- Members have assisted with Vaccination Centre Stewarding at a number of locations including Portishead and Gloucestershire Cricket Club, and will be continuing to do so.
- Rotary clubs across Bristol, including Bradley Stoke, are increasingly involved in supporting the national vaccination programme, particularly at Ashton Gate.
- We have also been pleased to provide monthly supplies to the Blond Angels Street Team, who support the homeless in our city and assist them in finding accommodation, and then employment, on a journey to self-sufficiency.
- Late last year we planted a crocus Rotary Wheel on Baileys Court Road (opp Sherbourne Ave) in recognition of Rotary's involvement in the eradication of Polio through worldwide immunisation. Editor's note: Above is a photo of it c18th March as this edition went to print. Doesn't it look fabulous!

I'm sure there's plenty I've forgotten, but this is a flavour of what we've been up to!



Bradley Stoke in Bloom by Sara Messenger

It was very disappointing in February to discover that the Manor Farm roundabout and corner had again received some unwanted attention, with the owl and a welcome sign going missing, a magnolia tree being snapped and broken, pots over turned, plants trampled and Super Pig being broken beyond repair. All vandalism has been reported to the Police.

Fortunately, due to the cold weather and the lockdown we hadn't yet installed the new 'Debbie' & 'Treacles' so they are safe.

The magnolia has been replaced with a same size bush (there are two, one at either end) and a lot of pot grown daffodils and hyacinths have been added with a few summer bulbs and shrubs as well. Bark chippings will be added soon. Local resident John stopped and kindly gave me £20 towards the repairs and Sue & Tony also donated £20! Support like this is really appreciated.

The Christmas Wishing Tree was still looking healthy and remained popular and untouched so it was left in place and replaced with hearts for Valentines day in February.

Before the snow came we were able to plant the 20 oak saplings from the Oakupy project which aims to save 750,000 saplings from being destroyed and we received one of their plaques. They have mostly been planted along Braydon Avenue replacing the large trees that have recently fallen.

We also received a mix of 30 Rowan & Spindle trees from Local company CGI some of which were for Bradley Stoke Community School, although due to the weather and the schools closure at the time these have yet to be planted out.

The Viaduct Exotic Animal Sanctuary, as a thank you for helping tidy up their gardens last year, gifted us their old plastic tortoise which has finally been released into the wild! (well Trench Lane roundabout) Along with a donated large bush and some bark chippings the roundabout is now looking good. Thank you to young Oliver who had stopped to chat earlier in the day and who we delegated the task of choosing a name for our Terrific Testudine!



Huge thank you to the very small group of volunteers who make up Bradley Stoke in Bloom and work so hard to keep the town looking lovely. Additional volunteers always welcome - contact them via the facebook page.

Gales Farm Meats

4 CHURCH VIEW, FILTON BS34 7BT (OPP FILTON CHURCH)
Open 6 days per week from 7.30am (Closes 1.30pm Mon & Weds)

Springtime
Homemade Pies and Dry Cured Bacon

Family butchers established over 4 generations
Selling Top Quality Beef, Pork, Lamb and Chicken Steaks
Speciality Sausages and Cooked Meats

Tel: 0117 969 1232
Follow Us on FB: galesfarmmeats

Order Now - we are pleased to help!

Woody's
BARBER SHOP

Bradley Avenue: Winterbourne
Open 9.00am to 5.30pm Mon-Tues-Thurs-Fri
Saturday 8.00am to 1.00pm
closed Wednesdays
NO APPOINTMENT NECESSARY

Garden Furniture

Enhance your garden space with new furniture. Relax and admire your hard work, enjoy social time or simply unwind with a cuppa.

Visit us in-store or shop with us online

We pride ourselves on being your friendly, independent and local Garden Centre.

IRON ACTON
Garden Centre

Wotton Road, South Glos, BS37 9XA
01454 228 764
www.ironactongardencentre.co.uk



Local oxygen therapy may be successful for long-covid

The Brightwell Centre in Bradley Stoke has been providing oxygen therapy in its barochamber benefitting those with Multiple Sclerosis, neurological and many other conditions for over 35 years. Oxygen therapy at pressure (utilising the barometric chambers) is now also being seen to be beneficial in easing many of the symptoms for people living with the effects of long-covid.

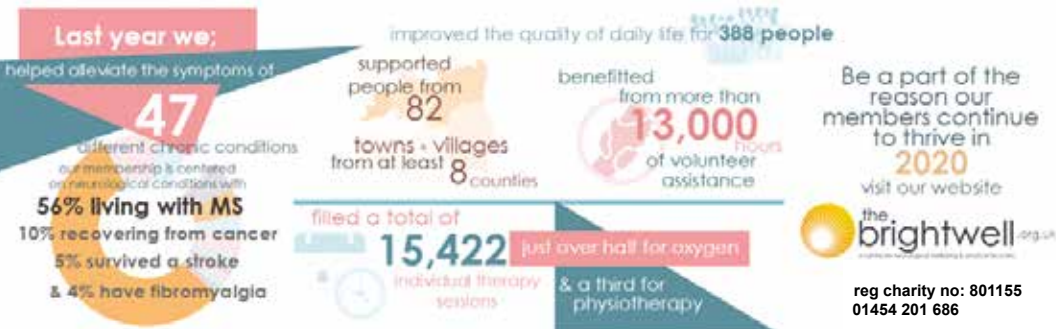
Following on from the improvements reported by a number of people living with long-covid in many countries, The Brightwell (along with other MS Therapy Centres across the UK) is now providing this service to those struggling with long-covid symptoms.

Patients currently undergoing oxygen therapy at The Brightwell report that they are already feeling the benefits. One such person who has been living with the symptoms of long-covid for the last eleven months, has had 20 sessions of oxygen therapy over the last 5 weeks and has reported a considerable improvement in their general condition, with the resolution of aggressive shooting pain and clearing of brain fog, permanent headaches and word blindness. In addition, they have reported that they are no longer fatigued and for the first time in many months feel like they are returning to their pre-covid selves.

Concerns have been expressed recently by Kamlesh Khunti, a professor from the University of Leicester who sits on SAGE, that the likely numbers of those who may end up suffering from long-covid could exceed those who have been hospitalized or have died from the virus.

Research is ongoing worldwide to find an answer to this serious complication to the virus but whilst the world waits for trials to be completed, high dose oxygen may have a major part to play.

Doro Pasantes, Centre Manager for The Brightwell says "We are pleased to be able to offer oxygen therapy, which may be a simple aid to recovery". Details of how to access this therapy can be found on the following website thebrightwell.org.uk.



Struggling with life? Receive some online support

Contact Osteomyology expert – Dawn Clode Ostm, Lic MET, Lic CR, FAO

As we hit a year of living with a pandemic and all the detrimental effects this has on our lives, it is no wonder there is a general sense of exhaustion as a nation. For some, the emotional impact goes beyond tiredness and they are struggling to get through this time. If this is you, or a friend or family member that needs help, get in touch with local therapist Dawn Clode who is well equipped to help.

I have visited Dawn for many years now to receive treatment for back and shoulder problems but her skills go far beyond delivering physical treatments that are not available at this time.

Dawn is an excellent listener and inspirator. She can deliver emotional healing via zoom. Techniques she can teach include –

- Confidence and Self Esteem Coaching
- Neuro-Linguistic Programming (NLP)
- Business & Life Coaching
- MAGIC – A Coaching Programme for Young People
- Mentoring

Dawn told us,

"It is my job, and privilege to support you in your journey to wellness in every way I can. It is my aim by working together we can ensure you become the best you possibly can be in Mind, Body and Soul!"



Dawn works from her Holistic Health Practice in Little Stoke. She will remain closed during lockdown for treatments in person (you can pre-book now) but can offer support online or over the phone.

She is happy for you to get in touch for further information.

Please call: **0795 1099 491**

Visit: life-and-soul-empowerment.co.uk

HARBORD OPTICIANS

Welcome to Mike Harbord Opticians - a family practice in Winterbourne Village.

Friendly, personal service and advice.

Full Eye Examinations and Retinal photography.

Qualified Optometrists and Dispensing Opticians.

A wide range of spectacles from NHS to handmade and bespoke frames.

Call today for an appointment
01454 775530

3 WHITEGATES, FLAXPITS LANE, WINTERBOURNE BS36 1JX

Clinical Hypnotherapist
Catherine Smart DHP MNCH CHBP

Hypnotherapy can help you:

- Stop smoking
- Stop panic attacks
- Lose weight
- Relieve lockdown anxiety
- Improve your self-esteem
- Combat Fears and Phobias
- Easibirthing practitioner for labour and fertility
- Stress and anxiety

Based in Winterbourne

Hypnotherapy is widely used for all psychosomatic disorders (mental and emotional states which actually produce physical symptoms). In a nutshell, hypnotherapy can generally help with any problem you're finding hard to handle on your own - thoughts and actions you'd like to banish or acquire, or emotional suffering that is too overwhelming or has gone on too long.

Call me on: **07964 991689**
E: Catherine@smarthypnotherapist.co.uk
www.smarthypnotherapist.co.uk

**FULLY FITTED
ROLLER
GARAGE
DOORS**

FROM **£895** * WAS **£1,354**
INC VAT

* Offer Valid For Openings Up To 2.4m Wide & Incl:
3 Remote Controls, Silver White Steel,
Internal Manual Operation

WHATS INCLUDED:

- ACOUSTIC & THERMAL INSULATION
- TWO REMOTE CONTROLS
- EXPERT MEASURING & FITTING
- 24 COLOURS AVAILABLE

GAROLLA
ROLLER SHUTTER DOORS
www.garolla.co.uk

**Made To Measure...
ROLLER GARAGE DOORS**

Garolla can save a lot of space inside your garage. Rolls up vertically into a box. Takes only 8 inches of head-room! Opens vertically so you can park up close to the door. Remotely open/close the garage even from inside your car.

CALL US TODAY

Phone: **0117 369 1061**
Mobile: **07537 149 128**

CE Approved

**MW
Funeral
Directors**

18 High Street
Westbury on Trym

0117 950 4100

Funerals from **£1,995**
Cremation costs included

www.mwfuneraldirectors.com

World Thinking Day 2021

by Sara Messenger

For those of you whose Brownie or Scout days are just a distant memory or those who weren't lucky enough to join us for scraped knees and jamborees, 22nd February is a special date for members of Guiding as it is our World Thinking Day, an annual event which is celebrated in 150 countries around the world by over 10 million Girl Guides and Girl Scouts. On this day we celebrate Guiding and its impact on girls and young women. The date was chosen as it is the birthday of both our founder, Lord Baden-Powell (1857) and his wife Olave (1889).

Our Theme this year is Stand Strong, Stand up and Stand Together for Peacebuilding. Peacebuilding is at the heart of Girl Guiding and Girl Scouting and is as vital and relevant in today's complicated and fractious times as it was 100 years ago. The World Association of Girl Guides and Girl Scouts (WAGGGS), together with the World Organisation of the Scout Movement (WOSM) have even been nominated for the 2021 Nobel Peace Prize, for outstanding contributions which have empowered millions of young people in their communities for more than a century.

Although we couldn't all celebrate together this year, South West England Girlguiding organized a virtual sleepover from 20th – 21st Feb where thousands of us were able to 'visit' all of our 5 WAGGGS World Centres, where the activities included everything from a tour of the centre, cooking local food, playing traditional games, building models of famous landmarks, traditional crafts and dancing 'Bollywood' style! The weekend started at 10am with a welcome from Carole Pennington, Region Chief Commissioner and ran until 8pm when the day finished with an international campfire and bedtime stories. On Sunday morning at 7am many of us renewed our Promise although I'm not sure if Carol knew at that point just how many of us were still in our PJ's! And the day concluded at 11am with a closing ceremony. The girls had a great time and despite the huge amount of organisation and logistics needed the day went without a hitch, unlike You Tube's subtitle software which put Bristol in South Austria and called Kusafiri our African World Centre everything from 'Coo's the theory' to 'Kiss the fairy!'

At a local level, parents were emailed 'Wishing you a world of peace' posters to put in their windows and in Bradley Stoke a tree was decorated with over 40 peace doves made by girls and their leaders, all with the word Peace written on in different languages.

Although many units have adapted to life under Covid and are meeting via Zoom we are hopeful that we may return to face to face meetings after Easter, although it will be up to each unit or venue when they do return. But Girl Guiding remains hugely popular and wants and needs more volunteers so that we can offer girls even more exciting adventures and experiences. We welcome volunteers of all backgrounds, age groups and abilities, so if you would be interested in joining us, our dedicated website is:

<https://www.girlguiding.org.uk/information-for-parents/register-your-daughter/>

or if your daughter is interested:

http://www.girlguiding.org.uk/get_involved/volunteer/register_your_interest/



Kirpa from 2nd Stoke Lodge Brownies adds her Dove to the tree

Splash into something new at
Bright Sparks Day Nursery & Pre-School

★ **NEW at Bright Sparks:**

- ★ Places for babies and children from 3 months
- ★ All year round childcare
- ★ Sessions from 8.00am – 6.00pm
- ★ All meals, snacks and drinks included
- ★ Funded spaces available
- ★ Register now to secure your place

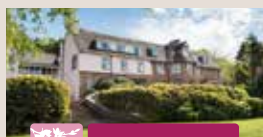


Find us next to Stoke Lodge Primary, Stoke Lodge, BS34 6DW
Call now to book your tour on 01454 615577
Visit our website brightsparkspre-school.com

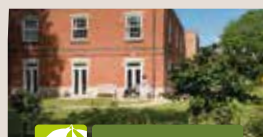
Excellence in all aspects of general nursing and residential dementia care

Bristol Care Homes
providing a unique care service

- beautiful gardens
- purpose built homes with 24/7 air circulation
- spacious rooms and wide corridors
- television with DVD and telephone in each room
- wheelchair provision at no additional cost
- high technology baths and walk-in showers
- top quality chefs
- programme of interesting and stimulating activities



Glebe House
ALMONDSBURY
Telephone 01454 616116



Beech House
THORNBURY
Telephone 01454 412266



Field House
HORFIELD
Telephone 0117 969 0990



Quarry House
FISHPONDS
Telephone 0117 965 4466

Find out more about our family of care homes at: www.bristolcarehomes.co.uk

Building back better: how volunteering can connect us all and improve our mental health

During the past year, many people have had a bit more time and space to think about life and what is important to them. A global pandemic and people separated from friends and families has meant that many have been looking for ways to help make a difference. As seen by the recruitment of NHS responders, there has been a huge public outpouring by people keen to offer their skills to support others.

The announcement of the roadmap provided much needed answers for the voluntary sector, and charities are able to provide more opportunities for those looking to feel part of their community again. Volunteering is the life blood of the non-profit sector and it is through the tireless efforts of those giving up their time that enables many organisations to carry out their vital work.

Jools, Volunteer Coordinator at Paul's Place explains how volunteering not only benefits the organisations that people volunteer for, but there are also huge personal benefits. "When individuals have been isolated for a year due to the consequences of the pandemic, this need for connection, purpose, and creating better mental health are more important than ever."

The NHS website recommends volunteering as a way to improve mental wellbeing, stating that, "acts of giving and kindness can help improve your mental wellbeing by creating positive feelings and a sense of reward, giving you a feeling of purpose and self-worth and helping you connect with other people."

Jools adds how "the rewards of volunteering can range from the need for work and college experience to simply wanting to add new skills to your CV."

Paul's Place is one charity offering fantastic volunteering opportunities this spring.

The charity created their new service, Paul's Place



at Home 12 months ago. A virtual service that brings the spirit of the day facility to people at home. "The roadmap enabled us to set a reopening date, however, it is expected that there will be some restrictions on numbers still and keeping our virtual services open alongside the day facility, allows us to reach those shielding or unable to return," explains Jools.

Volunteers are adapting with the times and Susan Weaver, a Paul's Place volunteer for 11 years now, is no exception. Helping the charity with their new service Paul's Place at Home by becoming a telephone befriender and hosting some of their Zoom activities such as Desert Island Discs, she has loved supporting the charity.

"I have given the members (those supported by the charity) a special gift of my time, my talents and my skills. In return, I have gained friendships and much satisfaction in helping this charity. I have shared in their laughter and their tears during our incredible journey together. From weekly onsite small group activities, supporting individuals achieve their goals, to helping during short breaks and holidays, every moment spent together is creating special memories for us all."

When asked what she looks forward to the most, like many of us, it is the "face to face contact with individuals during the past year and the enrichment they give to my life. I am eagerly looking forward to Paul's Place opening its' doors and sharing special times once more."

This spring, you can build back better by supporting local causes in your area.

If you are interested in supporting Paul's Place through volunteering, or would just like to find out a bit more about the current opportunities get in touch with Jools and drop her line on jeasty@paulsplace.org.uk

You can also stay up to date with volunteering opportunities by following them on social media.

Facebook: [@PaulsPlaceCharity](https://www.facebook.com/PaulsPlaceCharity)

Instagram: [@paulsplaceofficial](https://www.instagram.com/paulsplaceofficial)





Kemps Jewellers

Established 1881

For a professional, quality and friendly service

Kemps is proud to be independent in Bristol for nearly 140 years!



Kemps looks forward to welcoming you back into their fabulous shop from 12th April 2021

We look forward to opening our doors soon, in the meantime please visit our website to reserve items.

You can also email us at info@kempsjewellers.com if you would like any information about a piece of jewellery.



A large range of new and second hand diamond jewellery

Gifts for all occasions

Repairs & Bespoke jewellery service

Competitively priced

Professional friendly advice • Beautiful gift ideas

9 Carlton Court, Westbury-on-Trym

Tel 0117 950 5090 • WWW.KEMPSJEWELLERS.COM

Spring 2021 at Winterbourne Medieval Barn

As spring progresses community activities at the Barn will gradually re-start, initially with outdoor events, but until then we have a number of things you can join in at home:



Easter Craft Packs Posted to You

With covid restrictions still in place we cannot offer the usual Easter Egg hunt for children, but Easter Craft packs can be posted out for families to enjoy in the holidays. Packs cost £5 each and must be ordered online before 1st April. They will be sent out from 23 March.

YouTube Videos

The Barn's YouTube channel has free videos to help you hold your own family medieval Dinner Party, or have a go at Medieval Dancing.

Monthly Online Talks

Our monthly Tuesday Talks will be online until we can fully re-open the Barn. There will be a History talk on Zoom in April. Full details are on the Barn website. Tickets cost £5. All talks start at 7pm and need pre-booking so that Zoom links can be sent out in time.



Family Outdoor Activity: Woodland Wonderland – Wednesday 14th April

This will be the first event actually held at the Barn this year. We will be getting messy so please dress for the weather and for a bit of mud! We'll plant mini terrariums, create hanging mobiles for your garden, and make elf and fairy doors for our woodland friends! Social distancing will be in place, so family groups need to pre-book their chosen arrival slot

between 10am and 3pm. Car parking and toilets are available and we will be serving tea, coffee, juice, and sweet treats! Tickets are £5 per family and must be pre-booked.



Early Birdsong Walk and Breakfast – Saturday 8th May, 8am

Join us for a birdsong guided walk (around 1.5 hours) with naturalist Ed Drewitt, followed by breakfast in the Barn grounds. The cost is £15 per person, including breakfast. Let us know your dietary requirements when you book. Recommended for ages 12+. This socially distanced event will be outdoors, so please wear appropriate footwear and warm clothes. We will email you a week before the event to let you know what to expect on the day with regards to the latest covid guidelines.



Spoon-carving Workshop – Saturday 22nd May, 10am–5pm

Spend a fun and relaxed day learning how to carve a beautiful and functional wooden spoon. Age 18+. All tools and materials are provided and a lovely lunch is included. We intend to run this socially distanced course in the Barn, but if restrictions don't allow indoor activity by then, it will be outside. We will email you a week before to let you know what to expect on the day. Numbers are very limited. Book early via the Barn website.

Winterbourne Medieval Barn, Church Lane, Winterbourne, BS36 1SE

For further details about Winterbourne Medieval Barn, visit: www.winterbournebarn.org.uk

Facebook: Winterbourne Medieval Barn

Abbeywood Community School crowned 'Best Breakfast Club in the South West'

Abbeywood Community School has been crowned the best breakfast club in the South West in the annual Kellogg's Breakfast Club Awards, as voted by a panel of judges.

The school has received a cash prize of £1,000 to spend on its breakfast club, as well as a special party pack for the children to celebrate in the coming months.

The Kellogg's panel of judges selected winners based on the inspiring individuals and activities that transform the mornings of children across the UK and with so many amazing stories submitted, the competition was tough. Abbeywood Community School's commitment to ensure every child has breakfast to start their day and their ability to adapt to regulations during the pandemic impressed the panel.

During the first national lockdown, on top of free school meal vouchers, the breakfast club team collected donations and created food packages which provided support for any family who needed it. In addition to this, the club stayed open throughout lockdown and school holidays to support vulnerable and key worker children.

The breakfast club highlighted the work of Lisa Bamford (pictured) who worked tirelessly to ensure food parcels reached the most vulnerable families during lockdown and continued this throughout the summer holidays 2020. Since the schools reopened in September, Lisa and the pastoral team created an appeal for food bank style donations which helped to create Christmas food parcels for students.

Sharon Beesley, Assistant Head at Abbeywood Community School said: "We are thrilled to have our Breakfast Club and the commitment of Mrs Bamford recognised by the Kellogg's Breakfast Club Awards. We strive to ensure all our students have everything they need to prepare them to learn, including a healthy breakfast. We are so proud to share this award with our students, staff and wider community and can't wait to be back together in school to celebrate."

Abbeywood Community School will put the winnings towards setting up a long-lasting outdoor breakfast provision that would be immediately COVID safe.

Chris Silcock, VP and chief of Kellogg's UK & Ireland, said: "I have had the opportunity to see the

amazing work breakfast clubs do first hand. The pandemic has proven that now, more than ever, breakfast clubs are vital for so many families. They support working parents, offer a sense of normality when it is needed most and provide the essential fuel children need to learn.

"The Kellogg's Breakfast Club awards provide a fantastic opportunity to celebrate the incredible and vital difference these clubs make across the UK."

This year, Kellogg's is donating more money to support breakfast clubs than ever before. Along with their grants programmes which will provide funding for a minimum of 500 schools, Kellogg's is pledging more investment - in cereal and money - to help Magic Breakfast to support 167,000 children every morning.





The Foot Lady

Caring hands looking after your feet



Foot Health Professional
Donna Scott-Cottrell
MCFHP MAFHP Dip FH



New Mobile Clinic

Treatments include:

- Nail cutting • Fungal or infected nails
- Thickened nails • In-growing toe nails
- Verrucas • Corns and Calluses
- Athletes foot • Cracked heels
- Diabetes foot care and more ...

Contact Donna now for your next 'at home' Foot Care appointment

0773 312 4525
donna@foot-lady.co.uk
www.foot-lady.co.uk




We're still open

Caring for your sight and hearing safely in store

Being able to see and hear clearly helps keep you connected to your world and the people you love, especially during lockdown. So our stores remain open to care for all NHS and private customers, and to help relieve pressure on our partners in the NHS.

As always, your safety and wellbeing, and that of our colleagues, comes first. Current guidance allows you to leave your home for eye and hearing tests, and we have all of the necessary safety measures in place – in line with government advice.

Find out more at
[specsavers.co.uk/care](https://www.specsavers.co.uk/care)

Thornbury 12 St Mary's Way
Tel 01454 414 341

Specsavers



WARDS
SOLICITORS

solving your legal problems ...locally

For You:

Accident and Injury | Cohabitation | Conveyancing | Court of Protection | Crime | Disputes
Employee Relocation | Employment | Family Law and Divorce | Medical Negligence
New Homes | Notary Public | Probate | Probate Disputes | Wills and Mental Capacity

For Your Business:

Business Disputes | Business Employment | Business Relocation | Commercial Property
Commercial Services | Crime | Debt Recovery | New Homes Developers | Notary Public

Get in touch: 01454 204880

6-8 Fountain Court, New Leaze, Woodlands Lane, Bradley Stoke, Bristol BS32 4LA

wards.uk.com



Nursery is an important part of a child's well-being offering so many benefits, such as helping to build vital social skills, giving them a routine and restoring a sense of normality by being able to come in and see their friends again and just have fun! We were very pleased that 99% of our families were happy for their children to be able to come back and join us in our Risk Assessed, Covid-safe setting.

Over the past few weeks we have been busy collecting Easter Eggs to donate to the Bristol Children's Hospital this Easter (see opposite). The response has been fantastic from all our families, and also our local garage who has donated too! We hope to deliver these to the Children's Hospital at the start of April.

There is never a dull moment at our nursery. We are so proud here at Ambourne to be able to provide the best apparatus for our children to explore all areas of their learning. We are so blessed to have a beautiful large garden for our children to not only burn off some energy but to extend their learning in the outdoor environment. With the arrival of Spring and a lifting of lockdown we look forward to restarting our regular Forest School outings to local parks and woodlands utilising our own Ambourne House mini-bus.

We are proud to be a Montessori nursery. Montessori is a child led form of education; the materials are specifically designed to meet each of the children's developmental needs and interests and they have full access to the Montessori equipment throughout the whole day at their leisure or within a planned activity.

We truly believe we provide children with the best start in life!

If you are interested in your child joining in the fun at Ambourne House, you are very welcome to come and see us. Give us a call on 01454 615352 and we can arrange a time for you to safely come in.

SAVE £60!!

BRING THIS ADVERT IN WITH YOU AND SHOULD YOU DECIDE TO JOIN OUR FAMILY WE WILL WAIVE THE INITIAL REGISTRATION FEE!! (USUALLY £60)



Ambourne House WE ARE OPEN Monday to Friday
DAY NURSERY & PRE-SCHOOL 7.30am to 6.00pm

- Private Day Nursery & Pre-School Offering Excellent Care & Education
- Only Local Nursery Offering the Montessori Approach
- Grant Places for 2, 3 And 4 Year Olds
- Homely & Stimulating Environment • Amazing Outdoor Play Areas

Take a look at our website ambournehouse.co.uk and follow us on Facebook



233 Gloucester Road, Patchway, South Glos, BS34 6ND ambournehouse@3abcare.co.uk T. 01454 615352

Inspiring the Girls - 10 Women Trailblazers in Science

Asked to depict a scientist, too many children draw a white man with 'mad professor' hair. Former primary school teacher Abby Harper of education resource experts PlanBee says science and technology has always been the domain of brilliant, creative women.

Mary Anning: geology rocks

Anning was a palaeontologist and a fossil collector. She was born in 1799 in Lyme Regis, Dorset. She collected fossils with her father. When he died, Mary sold them to help her mother pay off debts.

Among the fossils Anning discovered were:

- A 5.2 meter-long skeleton of an Ichthyosaur, the first to be found.
- A Plesiosaurus skeleton initially considered too good to be genuine.

An interesting fact about Mary Anning - Even though she found lots of fossils and was an expert in the subject, she was often not credited with her finds. Women were not allowed to be members of the Geological Society of London until 1904, 57 years after she died.

Anning is now starting to get the recognition she deserves: a statue of her is to be erected in Lyme Regis after a successful campaign by 13-year-old local teenager Evie Swire, and a film about the life of Anning, 'Ammonite', starring Kate Winslet, is due out later this year.

Ada Lovelace: switched-on programmer

The daughter of poet Lord Byron and Annabella Milbanke, Lovelace was born in 1815 in London. She became interested in Charles Babbage's machines, which were designed to calculate mathematical tables mechanically, removing the errors that can appear when calculations are done by humans. Although Babbage's machines were never built, Lovelace's notes are an important part of early computer programs.

An interesting fact about Ada Lovelace She has a computer programming language named after her: Ada.

Marie Curie: prized Nobel laureate

Marie Curie was a Polish-born physicist and chemist. She is well known for working with her husband Pierre as they discovered the radioactive elements Polonium and Radium. In 1903 Curie became the first woman to win a Nobel Prize for

her involvement in research on radiation. In 1911, she became the first person to win a second Nobel Prize, this time for her work towards the discovery of Polonium and Radium.

It is believed she died from the effects of long-term radiation exposure.

An interesting fact about Marie Curie - One of Curie's daughters, Irène Joliot-Curie, also won a joint Nobel Prize in Chemistry with her husband – for their discovery of artificial radioactivity.

Rosalind Franklin: DNA discoverer

Franklin was an English chemist whose work was essential to understand the complex structure of DNA (deoxyribonucleic acid), the molecule in the cells of all living things that contains the genetic code. The code can determine things like skin, hair and eye colour as well as other traits which we inherit from our parents.

Franklin took the first X-ray picture showing that the DNA molecule was shaped like a double helix. This photo was used by other scientists to discover the structure of DNA, without clearly naming her as a contributor.

The work that led to the discovery of the double-helix structure of DNA was awarded a Nobel Prize in 1962 – but the award went three men, and Franklin's work went unacknowledged.

An interesting fact about Rosalind Franklin Australian astronomer John Broughton discovered an asteroid and named it '9241 Rosfranklin' in tribute to Franklin.

Jane Goodall: primate pioneer

Born in London, Dame Jane Goodall is considered the world's foremost expert on chimpanzees and is best known for her life-long study of chimpanzees and their social interactions in Tanzania. Through hours and hours of careful watching, sketching and note-taking, Goodall was one of the first to observe a chimpanzee using tools to fish termites from their mounds. She was also one of the first to observe



chimpanzees hunting for meat and gnawing on animal bones, debunking the theory that chimps were herbivores.

An interesting fact about Jane Goodall Instead of numbering the chimpanzees as was the custom at the time, Goodall named the chimps. David Greybeard was one of the first she named. Others included Gigi, Mr McGregor, Goliath, Flo and Frodo who eventually kicked Goodall out of the troop when he became the leader.

Mae C. Jemison: out of this world

Mae Carol Jemison became the first black woman to travel into space in 1992.

Born in the US, Jemison graduated from university with a degree in chemical engineering before earning her medical degree. Jemison was part of the 1992 STS-47 mission during which she orbited the Earth 127 times! She was in space for almost 200 hours during which she conducted experiments on the effects of weightlessness on herself and the crew.

An interesting fact about Mae C. Jemison Jemison is a huge Star Trek fan. Whilst she was in space, she would often open communications by saying "Hailing frequencies open" which is a quote from the show. She even appeared on an episode of Star Trek in 1993.

Maggie Aderin-Pocock: star quality

Maggie Aderin-Pocock was born in north London in 1968. She is a space scientist and has a passion for sharing and educating both adults and children about space and other areas of science.

She co-presents "The Sky at Night" as well as appearing on many children's TV shows too!

An interesting fact about Maggie Aderin-Pocock Aderin-Pocock was diagnosed with dyslexia at age eight. She struggled at school but was passionate about science.

Mary Somerville: astronomical achiever

Somerville was a Scottish scientist who studied mathematics and astronomy. She was jointly admitted as the first female member of the Royal Astronomical Society. Her work focused on the sun's radiation effects on Earth's substances and many have agreed that her later works and books lead to the discovery of the planet Neptune.



She was passionate about supporting women in education and fighting for their civil rights. At one point she was Ada Lovelace's tutor and friend.

An interesting fact about Mary Somerville - She features on the new Scottish £10 note.

Elizabeth Garrett Anderson: medical marvel

Elizabeth Garret Anderson was the first woman in Britain to qualify as a physician and a surgeon. Born in London, Garret was initially taught by her mother, as there was no school nearby. When she was sent to boarding school at age 13, Garrett was upset by the lack of science and mathematics at her all-girl boarding school.

It is said that Garrett was inspired by an entry in the English Woman's Journal which talked about the first female doctor in the US, Elisabeth Blackwell. This spurred Garret into meeting with Blackwell and opening up the path to medical careers for women

Through private study, Anderson obtained a certificate in anatomy and physiology. She finally obtained her licence to practise medicine in 1865.

An interesting fact about Elizabeth Garrett Anderson - Garrett was not allowed to work in a hospital, so in 1865 she opened her own practice in London.

Sarah Gilbert: Covid vaccine hero

Sarah Gilbert is a British vaccinologist and professor of vaccinology at Oxford University. She specialises in the development of flu vaccines and has been working on new ways to create vaccines for over 10 years. During the 2020 COVID19 pandemic, she co-developed a much-needed vaccine with the Oxford Vaccine Group.

An interesting fact about Sarah Gilbert - Gilbert would often work from very early in the morning (4am) to late at night.

Meadowbrook Primary and Abacus Preschool working in partnership!

Meadowbrook Primary and Abacus Preschool are co-located, and already have a close working relationship.

Their latest partnership project has drawn in local residents, the police, council and businesses, in an effort to combat dangerous driving and parking in the area.

There are plans afoot to provide banners around the school and preschool site, and these have been beautifully designed by Abacus children! (see front cover and top right)

Meadowbrook has been lucky enough to secure sponsorship for some signage, (photo right with many thanks to Nick at LCM Automotive - see advert below), with the aim of deterring dangerous parking, and getting drivers to consider their speed, when travelling near the school.

We're hoping that these, and other activities planned by the school and its partners, will make the area a safer place for our children and neighbours!



FABULOUS NEW RESOURCE CENTRE AT PATCHWAY COMMUNITY SCHOOL

With our students now back full time at Patchway Community School, we are proud to introduce our new Resource Centre.

We have been really excited to see our students engaging with our Covid-safe mobile library over the last few months, and we've used this strange time to give our Library a makeover! With almost 7000 books, all of our students will have access to reading books that they find enjoyable, engaging and challenging, and can borrow these for free at any time. Our Resource Centre Manager, Mrs Evans, can help you find a book that you will enjoy even if you're not used to reading for fun!

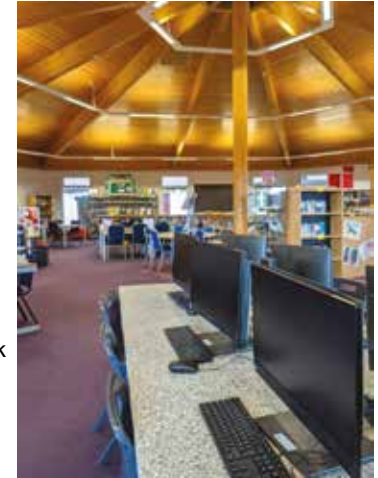
Our Year 7 and Year 8 students have timetabled 'Library Lessons' each week and the mobile library will be visiting Year 9, Year 10 and Year 11 English lessons. Students can also visit the Resource Centre during break and lunch (on their allocated day each week to avoid mixing year group bubbles!) to borrow and return books.

We also have 40 brand new computers ready for students to use in Library Lessons. These computers will also be used by our Sixth Form students, who will have some of their lessons taught in the Resource Centre. Here, they will be able to work on group projects, engage in research and use the brand new interactive smart board and projector to work on group projects and hone their presentation skills.

In the future, we are hopeful that we will once again safely be able to host events and invite special guests to our Resource Centre! Pre-Covid19, we enjoyed using the space for special Careers events hosted by local businesses with whom we partner, parent/carer coffee mornings, information sessions (including those run by the local Police), workshops and clubs.

Finally, we have our comfy reading corner ready for students who want to settle down and really get stuck into a book!

We are so glad that our students now have this wonderful space to enjoy, and hope to be able to invite you to visit soon!



SERVISING & MOT OFFERS

MOT £20

WHEN BOOKED WITH A SERVICE

We also offer the following services

- Engine diagnostics
- Repairs
- Tracking
- Air Conditioning
- Exhausts
- Diagnostics
- Brakes
- Clutches



Tel: 0117 239 9683

Unit 4 Fairway Industrial Centre, Golf Course Lane, Filton, Bristol BS34 7QS

www.LCMservice.co.uk

Chris Ridgway
Mortgage Advisor

crystalclear
Financial Planning & Mortgage Services

0117 931 4423 / 07771 888 792

13 Brake Close, Bradley Stoke, BS32 8BA

chrisridgway@ccfpm.biz
www.localmortgage.co.uk

Partners: M Jones, D Jones, F Meadows.
Martin Jones Financial Planning Consultants, Boughrood Castle Farm,
Boughrood, Brecon, Powys, LD3 0YH Tel: 01874 754476



- Accounting / Tax
- Xero Gold Partner
- Payroll / VAT / CIS
- Fixed Rates
- First Meeting Free

t: 01179 113 328 m: 07977 599 670

info@lacaccounting.co.uk www.lacaccounting.co.uk

Free 1 hour accounts health check

Learners return to school after lockdown

Monday 8th March saw the full return to school for all primary learners and staff and a week of lateral flow testing in Olympus Trust secondary schools Patchway, Bradley Stoke Community School, Winterbourne Academy and Abbeywood Community School.

Many secondary students have now completed the 3 rounds of supervised testing in school and have been given their home testing kits to conduct tests twice weekly at home.

Secondary students returned to school on Monday 15th March for induction and then fulltime learning with some adaptations to the arrangements that were in place before Christmas, but many things the same. The principal change is that everyone in secondary settings will have to wear face coverings indoors, including in lessons, until Easter, at which point the Government is going to review the guidance.

Face coverings are not required in primary settings and there is no Covid-19 testing for the children.

Staff in both primary and secondary phases are now being provided with home testing kits and are encouraged to conduct twice weekly tests until further notice.

Staff did an exemplary job of setting up secondary school test centres and test processing and were on hand to reassure and care for students during the testing process. The turn-out for students at school testing centres was high ranging from 80% to 94%. The Trust CEO Dave Baker also volunteered to help out alongside teachers and support staff (inset photo).

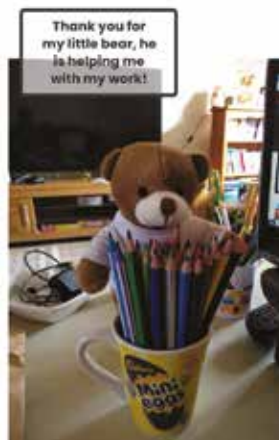


Reports from Trust primary settings have been really positive with lots of happy children and exhaustion all round by the end of the first week back into routine.

Headteacher, Nicola Bailey, at Meadowbrook Primary School said, "It has been so lovely to see the children back at school - we had missed them all so much! It's been great to hear them catching up excitedly with their friends in the playground, and we have been so impressed with their positive attitudes to learning in the classroom and beyond!"

During lockdown, we delivered a Meadowbrook teddy to each child (photo below), to keep them company until we could all be together again. The teddies proved enormously popular, and we loved seeing all the photos and updates of what they were doing!"


At Abbeywood Community School, 94% of students came in for in-school COVID-19 testing and the majority of students have now returned to school.



Headteacher David Howe said, "The students have been hugely enthusiastic to be back at school and it is clear they are eager to get back to classroom-based learning. The students were superbly supported with their learning throughout lockdown with remote live lessons delivered by teachers every day but there is no substitute for learning in school."

Parents have been supportive of the testing and return to school. One parent said, "We are really pleased Abbeywood is open to all students again and have been so impressed with how the school has balanced keeping the students safe, running all the coronavirus tests, track and trace and carried on with teaching and supporting their students. My son has been in school throughout the lockdown as I am a key worker but he is delighted to be with all his friends again in school. I couldn't fault their care and support for the whole family. The school has been completely amazing in the way it has supported students and kept their learning going and in daily contact with the teachers and pastoral staff."




Abbeywood
Community School

Abbeywood Community School is totally committed to inclusiveness and providing the highest quality of education in the broadest sense. We aim to develop each individual through excellent teaching and a wide range of extra-curricular opportunities, to ensure each student can become a confident, well-rounded citizen, ready to take their place in society.

@AbbeywoodSchool
@AbbeywoodSchool

For more information visit:
abbeywoodschool.com



Need Piano, Keyboard or Classical Guitar Lessons?

(Children and Adults)

Contact Hilary
BA Hons, CT ABRSM, DBS Certified

0117 979 2832
based in Bradley Stoke


LAURA JANE
HYPNOTHERAPY
Just Imagine

Solution Focused Hypnotherapy

What Hypnotherapy Can Help You with ...

- Anxiety • Stress • Low Mood • Bereavement
- Postnatal Depression • Giving up Smoking • Pain Management • OCD • IBS • Fears & Phobias
- Insomnia • PTSD • Panic Attacks • Confidence & Motivation • Weight Management • Sports Performance & Rehab • Support during Chemotherapy

... AND MUCH MORE!

07807 936080
www.laurajanehypnotherapy.com

Dunkley's

Chartered Accountants

30 YEAR ANNIVERSARY



CELEBRATING

30 YEARS IN BUSINESS

T: 01454 619900 E: ADVICE@DUNKLEYS.ACCOUNTANTS

WOODLANDS GRANGE, WOODLANDS LANE, BRADLEY STOKE, BS32 4JY

Dunkley's Chartered Accountants celebrate their 30th birthday!

Award-winning accountancy practice, Dunkley's, will be celebrating their 30th year in business on Tuesday 13th April 2021.

Dunkley's Chartered Accountants, a multi award-winning accountancy practice based in Bradley Stoke, Bristol, are celebrating a significant milestone this year, its 30th birthday!

In April 1991, Director Mike Dunkley, started the business from his back-bedroom with a cat for company. 30 years on and Dunkley's is now recognised as one of the leading independent practices in the South West.

Mike Dunkley states *"2021 is a very special year for us as we acknowledge how far Dunkley's has come and recognize everyone who has supported the business along the way. Dunkley's would not be where it is today without its wonderful clients, hardworking staff, and supportive community. 30 years in business is a significant milestone and an achievement that is worth celebrating."*

The success Dunkley's have seen can be attributed to its forward-thinking, hands-on approach to accountancy and its constant desire to put its clients first and ensure the service they receive is second to none.

This approach continues to drive the business forward and has helped Dunkley's expand its service offering and reach to individuals and businesses across the UK. Today, Dunkley's is far more than a local practice and instead is a leading figure in the accountancy industry.

The journey the business has been on to get to where it is today, would not have

been achievable without a dedicated and knowledgeable workforce. Over the last 30 years, Dunkley's has grown from 1 employee to 50. The practice now has 3 Directors, each equally invested in the business and a management team of 7 to support Dunkley's continual growth and development into the future. Dunkley's have always been a supportive employer investing in their workforce to ensure they can develop future leaders of the business. With the business continuing to move forward it is providing an opportunity for all involved to share in its success.

Lisa White comments on the recent restructure *"Matthew and I have been Directors of Dunkley's for over 5 years and are delighted to have been given the opportunity to invest further into the business working alongside Mike. Dunkley's has continued to show significant growth over the last few years, and we are looking forward to building further on this success."*

Dunkley's have grown from strength to strength over the last 30 years in terms of client base, service offering and employee numbers, but what has not changed is the ethos that the business was built on. Dunkley's continue to be the approachable, affordable, and personable practice which looks after each and every one of its clients to ensure they receive a bespoke service suited to their individual needs.

For further information about Dunkley's and its journey over the last 30 years, please visit <https://www.dunkleys.accountants/>

NEED MORE ^{affordable} SPACE?

The Avonmouth Space Program provides secure, affordable, ground-level storage to local homes and businesses. **Perfect if you've been decluttering.**

^{Dave} To find out more, email Dave at: avonmouth@thespaceprogram.co.uk or call him today on **01172 900237** www.thespaceprogram.co.uk/avonmouth

Business for Sale

Successful local oven cleaning business for sale. Very simple to run, this well established franchise offers many advantages including:

- Immediate cash flow with work scheduled in the diary from day one.
- Lots of lovely repeat customers with new customers added every week.
- Hours to suit: part-time or full-time, one or two people.
- Full training and support.
- Experience days available.

For more information, call Myles:
07557 110 932 | ovenclean.com



My name is Myles and I have been running the Ovensclean franchise across the Stokes for the last five years. I have been pleased to meet a great many of you in this time!

It is now time for me to do something different and I am offering my business for sale.

Oven cleaning is a good solid business that is increasing in demand each year and suitable for both men and women across a wide age range.

With your own Ovensclean business you can set your own work/life balance. Whether that's part-time, full-time or expanding into a multi-van operation.

The person who takes over the Ovensclean business will receive full training from me, continued support from Ovensclean head office, and appointments ready to go from day one.

It's been a great five years but now I would like to retire and start my house renovation project.



Inheritance Act Claims

Alison Dukes, Solicitor of AMD Solicitors considers what you can do if your expectations of inheritance are disappointed and the possible claims that can be brought under the Inheritance (Provision for Family and Dependents) Act 1975

The first point to make is that the deceased must have been domiciled in England and Wales before a claim can be brought under the Act. Secondly, claims can be brought even if the deceased left no Will.

Applications may be made by Spouses, parties to registered civil partnerships, former spouses who have not re-married, co-habitants, dependants and children. Children include those who, during any marriage or civil partnership of the deceased, were treated as children of the family and can include adult children.

Dependants include persons who were maintained wholly or partly by the deceased immediately before his death. The deceased must have been making a substantial contribution to the reasonable needs of the claimant.

The Act makes a distinction between claims by surviving spouses or civil partners and those by other claimants. Surviving spouses or civil partners are treated more favourably and the Court will consider whether the deceased's Will or intestacy made such financial provision as it would be reasonable in all circumstances of the case for the surviving partner to receive 'whether or not that provision is required for his or her maintenance'. In practice, the Court must look at what the survivor would have received if the marriage or civil partnership had been dissolved rather than terminated by death.

For other claimants, the issue is whether the deceased's Will or intestacy, in all the circumstances of the case, made reasonable financial provision for their 'maintenance'.

Claims must be issued within 6 months of a Grant of Probate or letters of administration although, exceptionally, leave may be granted after this deadline to issue an application.

In considering the merits of a claim the Court takes various statutory factors into account including the size and nature of the Estate. It is important to note that under the 1975 Act, the Court can treat as part of an Estate property or other assets that the deceased owned jointly with someone else, even though these would usually pass automatically to the surviving joint owner.



The Court will also consider the financial circumstances of the Claimant, the competing needs of any beneficiaries or other claimants, any obligations owed by the deceased to the claimant, any mental or physical disability of the claimant and also conduct, or any other matter considered relevant by the Court.

Most Orders under by the Courts under the 1975 Act are orders for the payment of lump sums, which are generally considered desirable in the interests of finality. However, the Courts do also have the power to make periodical payment Orders and to transfer property.

The Purpose of the Act

The Act was not designed to correct acts of unfairness or to reward the just and deserving. It does not remove a testator's freedom to dispose of his estate as he wishes. The question is not whether it might have been reasonable for a testator to assist a potential claimant but rather whether the provisions of the will or intestacy fail to make reasonable provision in all the circumstances. The question is objective rather than subjective.

Alison Dukes is a family solicitor at AMD Solicitors who also specialises in contentious probate matters and claims arising under The Inheritance (Provision for Family and Dependents) Act 1975. Alison can be contacted on 0117 9621460 or by e-mail to alisondukes@amdsolicitors.com. AMD have offices at Westbury Park, Henleaze, Clifton and Shirehampton.

Copyright AMD Solicitors

EvansEntwistle

CHARTERED MANAGEMENT ACCOUNTANTS & TAX ADVISORS

New Tax Year... New Accountant?

Choose an experienced local practice of CIMA Chartered Management Accountants to help you manage your business

evansentwistle.co.uk

432 Gloucester Road, t: 0117 924 7767
Bristol BS7 8TX

e: mail@evansentwistle.co.uk



Accountancy | Corporate Finance | Taxation | Business Advisory | Private Clients | evansentwistle.co.uk



Advice Making a Difference



Telephone us on (0117) 962 1205 or visit our website www.amdsolicitors.com



Are You Lonely? Are You Isolated?

Four Towns Community Transport was founded in 1999 and merged with Vale Link Community Transport in 2005. We are a registered charity controlled by an unpaid board of Trustees. We provide transport to those members of the community who, for whatever reason, cannot use existing transport services.

Our aim is to promote social inclusion within South Gloucestershire by helping residents to be self-sufficient and maintain their personal independence. We provide essential travel (supported by South Gloucestershire Council) for Diamond Travel Card holders as well as social trips for leisure. If you do not have a Diamond Travel Card you may still be able to become a member of 4T&VL and pay to use our services.

We make over 90,000 trips each year taking people to:

- The supermarket and other shops
- Work or education
- Lunches, on social visits and local trips
- GP and hospital appointments

Who can use our services?

You need to live in the Four Towns and Vale Link area: Almondsbury, Alveston, Aust, Bradley Stoke, Charfield, Cromhall, Falfeld, Filton, Frampton Cotterell, Hallen, Hill, Oldbury on Severn, Olveston, Patchway, Pilning, Severn Beach, Rockhampton, Stoke Gifford, Thornbury, Tortworth, Tytherington, Winterbourne

ONE or more of the following must apply:

- Aged 60 years or more
- Have special needs
- Be on benefits
- Have access problems
- Be a Diamond Travel Card Holder

You'll need to become a member

Four Towns and Vale Link will be offering free membership for the year from April 2021. This will be for our existing members (who paid last year.) From the April renewal date.

For each new member there will be no change in fee this year. Its only £15.00 to join, with group membership remaining at only £20.00 for a full year.



Diamond Travel Card holders travel with a £2 charge per single journey and £4 per return journey, payable to the driver on local journeys with us. For more information about obtaining a Diamond Travel card contact South Gloucestershire Council.

If your journey takes you over certain boundaries, charges will apply. We will advise you of this at the time of booking.

Social Car Scheme

If we can't get you onto one of our Ring-and-Ride services we will try to get you transport with one of our volunteer drivers in their own car. This costs 45p per mile from your drivers starting point to your destination and return to the drivers starting point.

PLEASE CALL ON 01454 250500/510 TO BOOK YOUR TRAVEL

MEDWAY DESIGNS Sewing & Alterations

- Bridal Wear • Alterations
- Evening Wear • Day Wear
- Soft Furnishings & re-upholstery

Ask about sewing lessons

Delivery & Collection Service Available

Lois Coulson

0117 969 1798 /

07950 396064

loiscoulson@ymail.com

**14 Watch Elm Close
Bradley Stoke**

Call now for a friendly personal service



South Gloucestershire Hockey Club

Here at South Gloucestershire Hockey Club, we are excited to be returning to the pitch as soon as April (pending no gov changes!)

It's felt like a very long winter for all and we want nothing more than to be back on the pitch playing hockey in the sunshine.

This summer we have a men's league, ladies league and for the first time a mixed summer league. This is a great way improve fitness and skill ready for winter league which we hope will begin in September.

If you're looking at returning to hockey or are thinking about joining a new sport, we welcome all abilities! If you would like to come and have a friendly game of hockey this summer and get to know our club then please get in touch, we would love to hear from you!

Instagram: southgloshockey

Facebook: South Gloucestershire Hockey Club

Website: <http://www.sghc.org.uk/>



**Open Training Session: ALL Age Groups
Friday 2nd April 2021
Contact girls@dingsrugby.co.uk for details**

Resuming Outdoor Bowls in Bradley Stoke



Working on the assumption that the government's roadmap out of the lockdown will be achieved, Bowls England is consulting with the Department of Digital Culture Media and Sport on the guidelines for resuming bowls.

If everything goes to plan we already know that, from 21 June, all restrictions will end in the UK, so hopefully bowls would be able to resume as normal after that date.

The question is what restrictions will be in place for outdoor bowling from 29 March up to 21 June? The club has already arranged a full season of fixtures in the hope that bowling could resume as normal or in a covid-safe way from around mid-April.

For further updates and membership details please see the Club's website bsbc.webs.com and facebook pages.



Local Clubs and Groups in and around Bradley Stoke, Little Stoke and Stoke Gifford

BABY AND TODDLER GROUPS

Beehive Baby and Toddler Group, The Old School Rooms, Stoke Gifford. Thursdays 10-11.30, term time only. Church office 0117 9692486.

Bright Sparks Toddler Group Monday afternoons 1-3pm term time only All new families welcome phone : 01454 615577

First Steps Toddler Group - Christ the King Church, Bradley Stoke Thursdays 10.00 am-11.30 am term times. Phone 0117 9312304

Little Hedgehogs (0-5's) - Wednesday mornings, 10am-12noon school term time only. Edge Church Bristol , 1160 Park Avenue, Almondsbury, Bristol, BS32 4TF. 01454 837990.

Pre-School Rhyme time Bradley Stoke Library Mondays 10.45-11.15am 01454 868006 bradleystoke.library@southglos.gov.uk

Puddle Ducks - Mondays 10am to 12 noon during term time Brook Way Activity Centre. puddleducktoddler@hotmail.co.uk

North Bristol Twins Group - Fridays from 10-12 noon during term time (including half terms) at Bradley Stoke Evangelical Church £3 per family, northbristoltwinsgroup@googlemail.com northbristoltwinsgroup.co.uk

Trinity Tots - Mondays 9:30 - 11:30 during term time. Contact Holy Trinity Church Office on 01454 620975

LOCAL CLUBS AND ORGANISATIONS

1st Bradley Stoke Scouts - Beavers, Cubs, Scouts and our marching band meet at Brook Way Activity Centre and Holy Trinity school. Please have a look on our website for further information for both young people and adult volunteers at www.bradley-stoke-scouts.org.uk/join

1st Little Stoke Scouts - 1st Little Stoke Scout Group, Beavers, Cubs and Scouts. To enquire about your child joining or to volunteer call Tony Edmonds (Group Scout Leader) 07957880503, or email tonyedmonds108@yahoo.com

Bradley Stoke Book Club 'Bookaholics' meet at Soho Coffee in Bradley Stoke Leisure Centre on the 2nd Wed of each month at 7:30pm. Geoff Stobbart 07714 101354 geoffrey.stobbart@btinternet.com

Bradley Stoke Community Singers - Tuesdays term time only at Bradley Stoke Community School 7.15-8.30pm. Free and open to all info@bscsingers.co.uk or call 07743 333837 / 07599 252176

Bradley Stoke Lions meet every 2nd Monday in the Willowbrook Centre, 1st floor conference room at 7.30 pm Ailsa Young, 07737 106836 ambyoung29@yahoo.com

Bradley Stoke Radio - The Activity Centre Brook Way, Bradley Stoke, Bristol BS32 9DS, 01454 616055 bradleystokeradio.org.uk

Bradley Stoke Rotary Club. Breakfast club meeting 4 Fridays per month, 7.15-7.30am start, 8.30am finish, Bristol Golf Club, Blackhorse Hill, Almondsbury, Bristol. BS10 7TP. Contact the Secretary rotarybradleystoke@gmail.com

Bradley Stoke Sew and So's - New members welcome! Patchwork and Quilting Group, 3rd Monday in the month 1.30-3.30pm at the Jubilee Centre, Bradleystokesewandsos.weebly.com

Gifted drama group Saturday 10-11.30am. Term time at Holy Trinity church. Ages 8-12 years. Contact Hayley Thomas via church office 01454 620975

Girl Guides, Brownies & Rainbows - admingirlguidingbsg.org.uk, girlguidingbsg.org.uk

Goldies - a light hearted weekly fun sing along session for those who enjoy the songs from the 50s, 60s and 70s. We're not a choir but a group of local people who enjoy getting together and having fun. We meet every Tuesday 2-3pm The Old School Rooms, Stoke Gifford. £2 per session. All welcome.

Little Stoke Ladies Club - meets the 1st & 3rd Tuesdays 7.30pm at the Community Hall, Little Stoke Lane. Julie 0117 931 5007

Sevenside Ramblers - 'Friday Ambles' start in the Aldi car park on alternate Fridays at 10am. Weekend & evening walks -start in the Aztec West blue zone car park. Check site for details.www.sevenside-ramblers.org.uk

Stokes Art Group - All ability Painting Sessions held at Christ The King Church, Bradley Stoke Thursday mornings.

E: stokesart2@gmail.com
W: [stokesart0.wix.com](https://www.stokesart0.wix.com) facebook.com/stokesartgroup

Stokes Crafters - Every Thursday evening 7.30-9.30pm at Poplar Rooms, North Road, Stoke Gifford. £4 charge includes refreshments. Contact via Facebook page or Zoe Coggon - zoecoggon@gmail.com or 07815 662446

Stokes Phoenix Club - meets 1st Tuesday of the month, 10am-12noon at Little Stoke Community Hall, Little Stoke Lane. Contact Rosemary Davis 01454 614474

Stokes Singers - Thursdays in term time at Coniston Community Centre, Coniston Road, Patchway 7.30-9.30pm. We are a mixed choir and do not hold auditions. Contact Gillian on 0779 0909 726 for further details.

Willowbrook Townswomen's Guild - Jubilee Centre – 7:30 – 9:30pm the 2nd Tuesday of every month. Ros Gallear - rosalindg@tiscali.co.uk

Winterbourne Wind Band - Thursdays 7.30-9.30pm at Greenfield Centre, Park Avenue, Winterbourne BS36 1NJ. Brass, woodwind, percussion, bass players wanted. Loan Instruments available. Contact Dan 01172 395210.

Women's Institute (WI) - Bradley Stoke: Jubilee Centre 2nd Wednesday of the month at 2pm contact Janet 07845 744351.

Women's Institute (WI) - Stoke Gifford WI meet on the 1st Wednesday of the month at 7.30pm at Trust Hall, North Road, Stoke Gifford BS34 8PF contact Sue Grimsted 0117 9793409

Woodcraft Folk - children's 6+ activity group Wednesdays 6-7pm Jenny on 0117 9093969

On these pages we have tried to collate many of the non-profit making groups, clubs and organisations that regularly meet across the Five Stokes area, along with Church and School information. If we have got your details wrong, or missed out your club completely, please let us know community@mattersmagazines.co.uk and we will do my best to put it right for you!

SPORTS CLUBS

Almondsbury and Bradley Stoke Tennis Club - Opportunities for all levels, inc pay and play lessons for all on Saturday mornings, no booking needed. almondsburytennis.org.uk

Aretians Rugby Club for Cubs, Juniors and Seniors Station Road, Little Stoke www.aretiansrfc.co.uk

Black and Blues Netball - Non-League Social Netball Wednesdays 7.30-9pm BSCS, <http://www.theblackandblues.co.uk/> or find us on Facebook 'Black & Blues Netball'.

Bradley Stoke Bowls Club - Baileys Court Activity Centre www.bsbc.webs.com.

Bradley Stoke Cricket Club - throughout the cricket season, we run 6 adult teams and five youth teams. All contacts are on our website at bradleystokecc.play-cricket.com

Bradley Stoke Jiu Jitsu Club - Chris Harris, maru.jiujitsu@gmail.com We train at Bradley Stoke Leisure Centre Tues & Fri evenings, classes for children and adults

Bradley Stoke Junior Netball Club - The Jubilee Centre. Every Wednesday U12's 4.30pm-5.30pm, U14 and U16's 5.30pm-7.00pm. Please email bsncjuniors@yahoo.co.uk

Bradley Stoke Judo - Various days and times, Bradley Stoke Leisure Centre, www.bradleystokejudoclub.com

Bradley Stoke Squash Club - For adults, Juniors and Children. Welcoming new players from beginners to advanced. Club night Sunday nights for all From 6pm. Children's coaching on Sat Mornings. Contact Mark Stone for details 07786 911580

Bradley Stoke Town Football Club - FA Charter Standard Community Club, Adult training, Tuesdays at Patchway Sports Centre. For more info visit www.bstfc.co.uk or contact bstfc2005@gmail.com

Bradley Stoke United Football Club - Football from U7's to U16's see website bsufc.co.uk

Bradley Stoke Youth FC (BSYFC) – FA Charter Standard Community Club, U7s to U18s, disability football, mentoring, in-school coaching and football festival. Visit web site www.bsyfc.co.uk or contact mlee1@btpenworld.com

Bradley Stoke Youth Rugby at St Marys Old Boys Rugby Club for Minis, Juniors and Seniors - Trench Lane, Almondsbury website: www.smobrugby.com, 01454 250489 email: clubhouse@smobrugby.co.uk

Bristol Extreme Allstar Cheerleaders - Wednesdays 7-9pm Little Stoke Primary School, bristolextreme@gmail.com

North Bristol Rugby Club, Rugby teams from 4+ www.pitchero.com/clubs/northbristoljuniorsrfc/

North Bristol Running Group friendly group, 3 evenings per week, Tues, Weds, Thurs, in the Bradley Stoke area. Tuesday evening is aimed at Beginners whilst all levels are welcome on any of the evenings. Alan 0789 0182387. Find us on FB.

Sole Sisters - ladies only running group, meets Monday evenings in various locations Bradley Stoke & North Bristol, www.solesistersrc.co.uk

South Glos Hockey Club Trains Tuesday evenings at Bradley Stoke Community School 8pm-9.30pm with league games played on Saturdays and mixed on Sundays. <http://www.sghc.org.uk>, **Facebook** - **South Gloucestershire Hockey Club**

Stokes Cycling Club - Cycling club in and around Bradley Stoke area as well as long distance rides, for adults and families - www.stokescyclingclub.org.uk stokescyclingclub@googlemail.com

Stoke Gifford Cricket Club – We 2 Saturday league teams, occasional Sunday friendlies and club days. All ages and abilities welcome at a real community club. Winter nets start spring 2016. Contact Mark Stephens on 07816962503.

Stoke Gifford Short Mat Bowls Club -Tuesday mornings and Friday afternoons. For more information please contact 0117 9791807 or email sgsmbc@outlook.com.

Stoke Gifford Tennis Club - Tennis for Adults, Teenagers and Juniors all year round! Club night is on Monday's from 19:30. For further information about membership and coaching visit our website <http://www.stokegiffordtennisclub.co.uk>

Stoke Lane Athletic Football Club -- FA Charter Standard Community Club, u6 to u16 ; U18 Colts and two senior men's teams; FA accredited coaches; contact via www.stokelane.co.uk or email Club Sect 'steve' pspayne@blueyonder.co.uk or Club Mobile 07972 039413

Stoke Striders Running Club - A free recreational running group, Mondays 6-7pm Little Stoke Park, <https://www.facebook.com/stokesstriders>

CHURCHES / COFFEE MORNINGS

Amberley Road Baptist / Cafe Church, Patchway, 01454 610808

Bradley Stoke Evangelical Church Baileys Court Road 0117 9314716 www.bsec.org.uk

Christ the King Church Mautravers Close, Bradley Stoke 0117 931 2304. Coffee mornings with bacon butties Fridays at 9-11am. www.ctkchurch.org.uk

City Church Bradley Stoke Community School 0117 2303330. Community Coffee Morning Brook Way Activity Centre Thursdays 10-12 www.bridgecommunitychurch.org

Edge Church International. 1160 Park Avenue, Aztec West Business Park, BS32 4TL. Tel 01454 837990. www.edgechurch.co.uk

Holy Family Catholic Church Southsea Road, Patchway 0117 9081247 www.holyfamilyrcchurchpatchway.co.uk

Holy Trinity Church Broadcroft, Bradley Stoke 01454 620975 www.htcbradleystoke.co.uk

Little Stoke Baptist Church, Kingsway, 0117 969 6060. Coffee & Cakes Thursday mornings 10-12pm All Welcome.

St.Michaels Church, The Green, Stoke Gifford 0117 9692486 welcome@stmichaelsbristol.org. Coffee shop open Mon to Fri 9.30 until 4pm, and Saturdays 10-12.

Stoke Gifford Baptist Church 1, Rock Lane, 01454 610808



View from Trench Lane, *Update from Steve Cooke, Chair, SMOB RFC* *Return to training from 29th March!*

Unsurprisingly there has been no Rugby at St Mary's for the first part of 2021 as the country battled COVID and we all faced understandable restrictions on our usual activities. However, at the time of writing, there is light on the horizon with outdoor sport being allowed to recommence from 29th March!!

This will be a great relief to all our players, and also I expect, to the Mums and Dads who have been challenged to keep those in our Mini and Junior age groups (6-16) fit and healthy, both physically and mentally during the last 3 months or more.

We should not underestimate the impact not being able to play with friends has on our young people and rest assured that St Mary's is delighted to get back to training from the end of March and playing matches as soon as the government decides it is safe to do.

For those of you wanting a new challenge – the O2 Group is a great way to socialise and have fun playing touch rugby to music. The St Mary's O2 touch team is always welcoming to new recruits – the games mix women and men, girls and boys of all abilities and is a fun non-contact version of Rugby.

O2 Touch: Joanne Winter:
joannewinter88@googlemail.com

Now taking bookings for the hire of the Clubhouse for parties on Fridays and Saturdays throughout the summer - dates are going quickly!



Local Schools in and around the Stokes

PRIMARY SCHOOLS

Baileys Court Primary School, Head Teacher: Andrew Lynham,
Breaches Gate BStoke, 01454 838320

Bradley Stoke Community School Primary Phase, Head Teacher: Sharon Clark
Fiddlers Wood Lane BStoke BS32 9BS
01454 868840

Bowlsland Green Primary School, Head Teachers: Michelle Engley, Ellicks Close BStoke, 01454 866766, bowlslandgreen.org.uk

Holy Family R.C. Primary School, Head of School: Dawn Breeze, Amberley Road Patchway, 01454 866786

Holy Trinity Primary School, Headteacher: Janet Dickson,
Broad Croft BStoke, 01454 866735, holyltrinity-pri.s-gloucs.sch.uk

Little Stoke Primary School, Headteacher: Dan Ross, Little Stoke, 01454 866522, <http://www.littlestokeps.co.uk>

Meadowbrook Primary School, Head Teacher: Nicola Bailey, Three Brooks Lane BStoke BS32 8TA, 01454 868630, meadowbrookprimary.co.uk

Stoke Lodge Primary School, Headteacher: Will Ferris, School Close, Bourton Avenue, Stoke Lodge, Patchway BS34 6DW
01454 866772

St Chad's Patchway C of E Primary School, Head Teacher: Mrs Steph Jenkins, Cranham Drive, Stoke Lodge, Patchway 01454 866523

St. Mary's R.C. Primary School, Acting Head Teacher: Mrs K Burden, Webbs Wood Lane BStoke, 01454 866390,

St Michael's Primary School, Head Teacher: Mark Freeman, Ratcliffe Drive, Stoke Gifford 01454 866781. www.stmichaelsssg.co.uk

Wheatfield Primary School, Head Teacher: Phil Winterburn
Wheatfield Drive BStoke, 01454 868610

SECONDARY SCHOOLS

Abbeywood Community School, Head Teacher: Dave Howe, New Road Stoke Gifford BS34 8QT, 0117 307 5660, abbeywoodschool.com

Bradley Stoke Community School, Head Teacher: Steve Moir
Fiddlers Wood Lane Bradley Stoke BS32 9BS, 01454 868840, bradleystokecs.org.uk

Patchway Community College, Head Teacher: Karen Cornick, Hempton Lane Almondsbury BS32 4AJ, 01454 862020, patchwaycc.com

Bradley Stoke Town are now a 'Kick It Out Equality' Chartered Club!

We join many clubs around the UK to support the fight for equality in football and kick racism out of the game.



Before the current lockdown was announced on January 4th January, Bradley Stoke Town managed to play one last League game against local club Greyfriars. On Saturday 2nd January, Bradley Stoke Town first team kicked off 2021 with a short journey to the Mile Straight club located in Stoke Gifford to face local club Greyfriars. BSTFC knew that this was going to be a tough game as both teams were eager to start the new year off with a win.

Greyfriars started the first half well and took advantage of mistakes made by Bradley Stoke with striker Matthew Troth scoring from close range taking Greyfriars into the half 1-0 up.

Bradley Stoke started the second half extremely well and continued battling which ultimately paid off with Tom Harris scoring a brace. The match finished 2-1 to Bradley Stoke. It was a good game to watch and both teams played good football.

The win moved Bradley Stoke into top position in the Bristol & Combination league.

This would turn out to be the last game of the season. No more games have been played across the five teams due to the government announcements which Bradley Stoke Town FC have adhered to.

There was a league announcement made late February that for the second year running, all football leagues that BSTFC are members of will be Null & Void.

The Government have announced that sport is to start back up at the end of March. BSTFC have organised games against local footballing teams to see out the football season.

The Bristol & Suburban league have decided to play out the end of the season with a football tournament which sees our C team in action in group K:

03/04/21 away Vs Stoke Rangers A

17/04/21 away Vs Bristol Phoenix Res

24/04/21 home Vs Old Georgians A

01/05/21 home Vs Hanham Abbotonians

We see the first team in action against Little Stoke & Thornbury Town, the Reserves & A team vs Sea Mills first & reserves. All fixtures and dates for all teams can be seen on our website.

During the month of February, Bradley Stoke Town FC received a phone call from EFL football team Barnsley seeking help in locating training facilities to use ahead of their league game with Bristol City. BSTFC assisted EFL Division one teams call assisting them to hire pitch facilities at Bristol UWE.

If the Festival is able to happen this year (decision to be made in May), BSTFC will be providing a bar for the Bradley Stoke Town festival Saturday 12th June.

Bradley Stoke Town FC start training for the new season late June. The club will be on the lookout for new players to boost the club. If you are 18 and over, new to the area and would like to join a Charter Standard football club that has a great social & friendly environment please get in touch at Bstfc2005@gmail.com or please visit the website www.bstfc.co.uk

All dates for fixtures, training session & upcoming events will be displayed on our website.

HARMONY

Your satisfaction is Our future

**50% SALE
NOW ON**

- ✓ We measure, make and fit ALL types of blinds
- ✓ COVID secure: keeping us ALL safe
- ✓ 5 Year no quibble guarantee



**01454 616848
0117 9314141
07970 803137**

www.harmonyblindsofbristol.co.uk

**THANK YOU
to all our customers
and for
recommending
us to others**

The FranklinButt Foundation - Giving to Local Projects in Bristol



Patchway based The FranklinButt Foundation is pleased to be supporting two local charities at this tough time during the pandemic.

The foundation is delighted to be able to donate to £500 to Mamas Bristol to support their meal box campaign that helps local families who are struggling during the pandemic -

<https://mealboxes.mamasbristolcic.com>

They have also donated £500 to Coniston Cafe at Coniston Community Centre in Patchway, where all profits from the cafe go into their charity work.

<https://conistoncommunitycentre.org.uk/brooks-cafe/>

Created by Simon Strachan and Dean Horseman, the FranklinButt Foundation's mission is to provide disadvantaged youngsters with empowering opportunities, where they feel safe, valued and inspired to achieve their full potential.

Simon and Dean set up the foundation after the tragic loss of close friends Jason Franklin and Darren Butt -

"At the end of 2019 and the early part of 2020 our community and close-knit friend circle lost 2 very big characters that has left a big hole in their families lives both having children and partners and a considerable emotional hole in our friendship groups as they were both much respected and everyone enjoyed their company and loved by all.

We were all hurting from this double tragedy, and then we got hit with Covid lock down in March 2020.

During lock down we it became apparent to me that both sets of friends and family wanted to raise money and keep their legacies alive to try and help our community.

So we decided to start the FranklinButt Foundation and created a Just Giving page to kick it off."

Supporters of the Foundation are now coming up with their own personal ways to raise money which will help support more community efforts.

FranklinButt Foundation supporter Grant Rees is running a double marathon on 25th April to raise money for the FranklinButt Foundation. This challenge will include running to all of the football grounds that the successful Patchway Reserves played at during the double winning season of 2005.

You can support Grant and his epic double marathon here

<https://www.gofundme.com/f/franklinbutt-2-legends-2-marathons>



Ashford
BUILDING CONTRACTORS

Design & Build - Extensions
Renovations - Kitchens
Plastering - Roofing

Call for a free no obligation quote
01454 610256 / 07974 199 680
AshfordBuilding@aol.com
www.AshfordBuilding.com



From a single tile
to a whole roof, all
build and roof works
undertaken, pitched and flat.

ROOF-TECH
Bristol

We have over 20 years experience
are fully insured and all work is guaranteed.
For a FREE, no obligation quote and roof survey,
just give us a call.
Office: **01275 540952** Mobiles: Ben Peters:
07724 681620 or Steve Coles: **07724 639830**
E-mail: roof-tech@hotmail.com

Almondsbury
Landscaping

Creative Professional Service

Patios • Paths • Block Paving Driveways • Tarmac Driveways
Ponds & Water Features • Fencing • Turfing • Decking • Pergolas • Planting
Brick and Stone Walls • Shed Bases • Complete Design & Build Service

Call Nick for a free quote
0117 9870959
07545 867348
Nick@almondsburylandscaping.com
almondsburylandscaping.co.uk



R H PLUMBING & HEATING
HEATING & BATHROOM SPECIALIST

- Central Heating
- Gas Work
- Complete Bathroom Refurbishments



Reg No 213960

RICK HARDING
PHONE: 01454 618009
MOBILE: 07711 225095
E-MAIL: alric.harding@hotmail.co.uk

Mayo's Heating & Plumbing

Boiler fitting, repairs and full
system upgrades including
radiators!

Full Bathroom upgrades,
including wetrooms.
Landlord certificates
and general plumbing.

Call James:
0117 904 3172 or
07952 272 851
m6yos@hotmail.com



Emergency number: **07798 905 337**
Keep it in your mobile

Lock Stuck and Barrels
The complete door and window service

Locked out?
Need to replace or
change your locks?

- Swift LOW cost emergency service to all home/commercial lock outs.
- Non destructive methods gaining entry quickly and efficiently from the initial call.
- Keys or handbag stolen? Burgled! Need your locks changed or re keying on a new home, call us.


ALSO: LOW cost Repair / replacement of UPVC / ALUMINIUM WINDOW and DOOR: LOCKS, HINGES, HANDLES AND MISTED UP / BROKEN DOWN DOUBLE GLAZED UNITS.

Full explanation and costs given before any works carried out. All work fully guaranteed. No call out fee

Call Dave on 07798 905 337
www.thebristollocksmith.co.uk
Based in Frampton Cotterell



Operating under CO-VID19
Recommended Practices



B&D Plastering is based locally and can help with all aspects of your plastering, damp proofing and rendering needs. Photos and a portfolio is available to show the high standard of work - see our website www.bdplaster.com. You can also read reviews and see photos of B&D Plastering on Facebook - just search for "b&d plastering".

For more information or to arrange a free quotation, give Dave a call on **07754 246 461** and he will be pleased to help.

KEEP CALM AND B&D PLASTERING

- Damp Proofing Specialist
- Reliable, Efficient & Tidy

T: **07754 246461**
E: BDplaster@hotmail.com
www.bdplaster.com

Find us on  **B&D Plastering**





CR Baines
Plumbing and Heating Ltd

- Gas Boiler Breakdown & Servicing
- Oil Boiler Service & Installation
- Landlord Safety Checks
- Worcester Bosch Approved Installer
- Up to 12 Year Guarantee
- Oftec Registered 137746
- Gas Safe Registered 549988

07825 999510
01454 279732
www.crbainesheating.co.uk




RJM Design and Build Carpentry Ltd

- Extensions • Conversions • Kitchens
- Refurbishments • New Builds
- Plans to Completion

Contact Rich Manning
0796 629 5055
www.rjmdesignandbuild.co.uk



DECOR8
PROFESSIONAL DECORATING SERVICES

FOR ALL YOUR DECORATING NEEDS
CALL ANDY TODAY FOR A FREE QUOTE
07779 321 228
www.decor8-bristol.co.uk | decor8-bristol@hotmail.com



clover ovens

Clover Ovens will clean your oven, range, hob, extractor or Aga using a non-caustic, fume free, eco-friendly system

Call Heath on 07943 870400
www.cloverovens.co.uk

Professional Oven Cleaning Services

Garage Doors
Installation | Maintenance | Repairs
Your local independent garage door specialists

Up & Over Doors | Sectional Doors | Roller Doors



VARIETY OF STYLES TO SUIT YOUR REQUIREMENTS



Paul Bartley
Ceramic Wall & Floor Tiling

Over 30 Years Experience
Based in Bradley Stoke
Free Quotations

Tel: 01179 799 882
Mob: 07971 923 834
E: paulbartleytiler@gmail.com



BRUNEL DOORS

Call Brunel doors for your free no obligation quotation
01454 882212

Visit our website: www.bruneldoors.co.uk



DOUBLE GLAZING REPAIRS & LOCKSMITH

Dale Clements

24-hour Locksmith Service (all types of doors)
Locks, Handles and Hinges Repaired
Misted and Broken Glass Replaced
Realign Dropped Doors and Windows

01454 740446 / 07970 019830
www.daleclements.co.uk



TS Technisys SECURITY
Home alarm systems

- Installation of wireless & wired alarms
- Repairs & Servicing
- New bell boxes, detectors and door contacts
- CCTV and Intercoms

0117 9075709 - 07938 861504
www.technisys.co.uk - info@technisys.co.uk
Based in Stoke Gifford

BEDLAM
www.bedlambeds.com

- Free local delivery
- Free assembly
- Free disposal of your old bed

Mobile Viewing Service for the Elderly and Housebound
Divans / Mattresses / Bunk Beds / Wall Beds / Pine Beds / Ottoman beds / Beds Made to Measure / Memory Shaping & Latex Mattresses

Open Mon-Fri 9am-5pm & Sat 10am-3pm
Visit our showroom:
The Old Post Office, 26a Gloucester Road, Rudgetway, Bristol, BS35 3RY

01454 617277 / 07887 853479
enquiries@bedlambeds.com

LOOKING FOR AN ELECTRICIAN?

CMG ELECTRICAL
Local Stoke Lodge based family-run domestic and commercial electrical business.
NAPIT registered with 30 years experience
All types and sizes of electrical work undertaken from complete rewires to additional sockets, electric vehicle charging points and PAT Testing.

Free advice and quotations.
Call Carl on 07986 736951
Email: cmg.electrical@virginmedia.com



LITTLE BATHROOM AND BOILER COMPANY

32 Gloucester Road North
Bristol
BS7 0SJ

www.littlebbc.co.uk **0117 979 2860**



Useful Trades and Services for the Home

Keith Usher
Painting, Decorating & Property Maintenance
Established 1991

Interior / Exterior / Insurance Work
Free Quotations / Advice
with no obligation

NO VAT

Tel: 0117 979 0536
Mob: 07778 536 780

235 New Road, Stoke Gifford, Bristol, BS34 8TQ

D.R. VIZARD and SON
Tel. 01454 416948

Registered with Age UK

ROOFING SERVICES

- UPVC Soffit
- Fascia & Guttering
- Stonework
- Re-Roofing
- Chimney Repairs
- Roofing Repairs
- Flat Roofer
- House Maintenance

RELIABLE LOCAL BUILDERS

MD Aerials
Call Michael Dagger

T: 01454 418 341 M: 07817 304 236
mike@mdaerials.co.uk www.mdaerials.co.uk

All types of aerial and satellite work undertaken including:

- Aerial Installations
- Reception problems
- Additional room feeds
- TV wall mounting
- Setting up and tuning
- CCTV
- Wi-Fi access points
- Free Quotations

Over 30 years experience

JDS GARDEN SERVICES
'FOR ALL YOUR GARDEN NEEDS'

We are a local business that offers a fast, reliable and quality service for all your garden requirements. Our services include:

- Hedge Trimming/Pruning
- Turfing/Seeding
- Ponds & Water Features
- Shed Bases / Erection
- Fencing / Trellis
- Decking
- Paving / Paths & Patios
- Raised Beds
- Complete Design & Build Service

Call John on: **0117 9143810** or **07846 430 212**
Fully Insured / Free Written Quote / All Work Covered by our "Workmanship Warranty"

LOW COST PLUMBING

Taps, Washers ✓
Toilets, Cisterns ✓
Leaks, Blockages ✓
Tanks, Overflows ✓
Lead Pipes, Stopcocks...etc... ✓

OAP DISCOUNTS and NO VAT

0117 957 5092

D-CR DOMESTIC APPLIANCES

Proud member of: **WTA**
Whitegoods Trade Association

DOMESTIC APPLIANCE SALES AND REPAIRS

- WASHING MACHINE
- TUMBLE DRYER
- DISHWASHER
- FRIDGE FREEZER
- COOKER
- HOB OR HOOD

Tel 01454 850522 or 07917441539
EMAIL: d-cr@live.co.uk
www.d-crdomesticappliances.co.uk

Useful Trades and Services for the Home

BonneFreshClean
Carpet & Upholstery Cleaning Specialists

NCCA
MEMBER SINCE 2001

Professional carpet, upholstery and leather cleaning carried out with care by an all-female team

For a free no obligation quotation call Karen on **01454 436001** or **07774 908410**
www.bonnefreshclean.co.uk
44 Townsend Lane, Almondsbury, Bristol, BS32 4EQ

THE AERIAL MAN
TV Aerial and Satellite Specialist

Affordable Prices - Reliable Service

- Digital Aerials
- Sky Work
- Poor Reception Problems
- Humax Recorders
- Fully Guaranteed
- Free Quotes
- Additional TV Points
- Repairs
- OAP Discounts
- TV Sales

01454 660 046
07818 413 451
www.theaerialman.co.uk

Which? trusted trader

The Stokes' Handyman

Here to help with those niggly jobs

The Stokes Handyman

Decking & Patios
Fencing & Gate Work
Internal & External Painting
Lighting & Electrical Work
Gutter Repairs & Cleaning

All jobs undertaken - 'No Job Too Small'

For a free quote contact Aaron on 0771 530 8211 or 07860157262

BLUEPRINT
Building & Maintenance

For all your General Building, Property Maintenance and Landscaping requirements

www.blueprintbristol.co.uk
email: blueprintbristol@hotmail.co.uk

Neal: 07733 326 437 Office: 0117 910 9453

GARY SMART ELECTRICAL

Domestic, Commercial and Industrial Installations

All electrical work undertaken ...

- Rewiring
- lighting
- bathroom showers
- kitchens
- garden and garages etc

Safety inspections, Periodic Testing, Fault finding and Repairs

Fully qualified City & Guilds Electrician 17th Edition Part P Registered

07805 070 947 • 0117 987 1437 • garysmart@sky.com
All backed with a 6 year Niceic insurance policy

TWO TONE

DECORATING & BUILDING SERVICES

- Interior & exterior painting & decorating
- Extensions
- Renovations
- Loft conversions
- Roofing, fascias, gutters
- Free estimates
- Private or commercial
- Small or large projects
- Fully insured
- References available
- Bristol based
- 25 years experience
- Insurance work undertaken

For decorating projects call
Steve: 07442 017446
or **Mike: 07989 507143**

For building projects call
Terry: 07990 983277

Steve Corris
Carpentry & Home Improvements

Local, friendly and reliable professional

07523 961 869
corriscarpentry@gmail.com
FB: Steve Corris Carpentry and Home Improvements

Reliable Service No job too small

Inspired Bathrooms

Design & Installation

- Bathrooms
- Wetrooms
- Tiling
- General Plumbing
- Workmanship guaranteed
- Portfolio and references available on request

Call us on
01173 307 537 or **07853 069 280**

www.inspiredbathrooms.net
inspiredbathrooms@hotmail.co.uk

Inspired by you, designed & installed by us

Useful Trades and Services for the Home

BS
Bradley Stoke Electrical LTD

Your trusted electrical contractor serving Bristol & the surrounding area.
Providing a comprehensive range of Domestic & Commercial Electrical services.
Don't be shocked when we turn up on time!

CALL TODAY
For Your **FREE** estimate

- Domestic
- Commercial
- EV Charging

www.bradleystokeelectrical.co.uk
T 01173327200 M 07443476097
E info@bradleystokeelectrical.co.uk

FRONT ROW FENCING

All aspects of garden and landscaping work undertaken:

- Fencing and gates • Patios • Decking
- Tree Surgery (Qualified) • Block Paving
- Garden Maintenance • Garden Design
- Garden Makeovers and Clearing
- Hedge and Grass Cutting
- Turfing and Artificial Lawns
- Timber Structures eg raised planters, pergolas, summerhouses, sheds

No job too big or too small, all our work is insured and guaranteed

07506 475 402 / 01454 416 695
or email f.r.fencing@outlook.com

find us on [facebook](#) **FrontRowFencingLandscapings**

Qualifications held in Garden Design, Horticulture, Sports Turf Maintenance (Natural and Artificial), PA1 and PA6
Pesticides tickets and also a qualified Arborist.

K.J. BARTON
PLUMBING & HEATING SERVICES

24 HR EMERGENCY SERVICE

MOBILE 07831 471000
01454 616972

- BATHROOMS • KITCHENS
- HEATING • DRAINS
- BURSTS

NO VAT

FREE ESTIMATES
GUARANTEED WORK
BASED IN BRADLEY STOKE

Plumbing & Heating Solutions
For Your Home

STOKES
Plumbing Services

- Local • Professional • Reliable
- Competitive Rates
- 30 Years' Experience

call **07812 350377**
tonyfuller.0325@gmail.com

A.1. AERIALS

- Digital TV Aerials
- Sky Digital / Freesat / FreeviewPlay
- Repairs
- Extra TV Points
- Phone now for Free Quotation

07956 491495 / 01454 318873
www.a1aerialsbristol.co.uk

Useful Trades and Services for the Home

Craig Thayer
Majestic Window Cleaning

0773 44 616 71
majesticwindowcleaning19@gmail.com

- Windows • Conservatory Roofs
- Gutters cleaned and cleared • Solar panels

COLLINS TREE SERVICES

Free quotes Fully insured

Pruning Hedge Trimming
Felling Stump Grinding Planting

All work considered All waste recycled
Friendly and professional service

0752 591 6882 0117 965 8399
info@collinstreeservices.co.uk

Thornbury Stairlifts
SALES SERVICING & REPAIRS

- New & Re-conditioned Stairlifts & Warranty
- Removals & Relocations
- Free Surveys & Quotes – No Obligation
- Rentals for Straight Stairs
- Independent, Professional & Friendly Advice
- Over 24 years practical experience

Independent Stairlift Specialist
01454 413 748 • 07833 318 722
www.thornburystairlifts.co.uk

In the Community for the Community

Keeping it Local!
Advertising YOUR Business
to 15,000 homes could not be easier!

Give Jaci a call on **01454 300 900**
or email sales@mattersmagazines.co.uk
and she will be pleased to help.

Did you know we can also help with promotions in our other titles:
• Winterbourne & Frampton Matters • Bishopston Matters

FAMILY BUSINESS
FAST RESPONSE

M.J. Harris
Domestic Repairs

ALL WORK GUARANTEED
OAP DISCOUNT

PLUMBING
FULLY QUALIFIED

EXPERTS IN REPAIR, SERVICING & INSTALLATIONS

GAS / LPG / OIL / BOILERS
GAS SAFE & OFTEC REGISTERED

ELECTRICAL
NICEIC APPROVED CONTRACTORS

DRAINAGE
WJA APPROVED COMPANY

BOOK YOUR BRISTOL ENGINEER NOW!
0117 428 1091

INDEX OF LOCAL ADVERTISERS

Accountants/Book-keeping

Dunkleys Accountants 30-31
Entwistle-Evans Accountants 32
LAC Accounting 26

Bathrooms / Bathroom Shop

Inspired Bathroom Design 46
Little Bathroom & Boiler Shop 45

Blinds - Harmony Blinds 40

Butcher - Gales Filton 10

Builders / Building

Ashford Building Contractors 42
BluePrint Construction 47
RJM Design & Build 44
Two Tone Building Services 47
Vizard and Son 46

Business Opportunity

Ovenclean Franchise 32

Car Mechanic

LCM Automotive 26

Care / Elderly

Bristol Care Homes 16

Carpentry - Steve Corris

Carpentry & Home Improvem 47

Carpets & Upholstery Cleaning

Bonne Fresh Clean Ltd 47

Central Heating

Baines Heating 44

M J Harris Domestic Repairs 49

Child Care/Nursery/Preschool

Ambourne House 22-23

Bright Sparks 16

Cleaning & Domestic Services

Clover Ovenclean 44

Community Articles

Bradley Stoke Bowls Club 35
Bradley Stoke in Bloom 11
Bradley Stoke Rotary Club 10
Bradley Stoke Town FC 38
Community Transport 30
Don't Feed the Horses 8
Easter 2-6
Four Towns Transport 34
Franklin Butt Foundation 41
Girls In Science 24-25
South Glos Hockey 35
St Mary's Old Boys RFC 38
The Brightwell: Oxygen Therapy 12
Volunteering: Paul's Place 17
Winterbourne Barn 19
World Thinking Day 15

Community Groups/Clubs 36-38

Doors

Brunel Doors 44
Dream Doors 9
Garolla 14

Drainage

M J Harris Domestic Repairs 49

Driving School

Sparky's 1

Electrician

Bradley Stoke Electrical 48
CMG Electrical 45
Gary Smart Electrical 47
M J Harris Domestic Repairs 49

Fencing -

Colour Fence 51
Front Row Fencing 48

Funeral Directors -

MW Funeral 14

Garden Centre

Iron Acton Garden Centre 10

Garden Design/Landscaping/ Maintenance

Almondsbury Landscaping 42
Alpine Landscapes 1
JDS Garden Services 46

Hair & Beauty -

Woody's Barbers 10

Handyman

Stokes Handyman 47

Health & Fitness - Nuffield

52

House / Home

Bedlam Beds 45

Brunel Doors 44

Dream Doors 9

Garolla Doors 14

Harmony Blinds 40

Technisys (Alarms) 45

Thornbury Stairlifts 49

Jewellers - Kemps 18

Locksmith

Dale Clements Locksmiths 45

Lock Stuck & Barrells 43

Medical / Therapist

Dawn Clode, Osteomyologist 13

Foot Lady, Donna 20

Laura Jane Hypnotherapy 29

Smart Hypnotherapy 13

Mobility Solutions

Thornbury Stairlifts 49

Mortgage Advisor

Crystal Clear 26

Music Shop / Music Lessons -

Hilary Music Lessons 28

Opticians -

Harbord Opticians 13
Specsavers 21

Painter & Decorator

Decor8 44
Keith Usher Painter & Decorator 46
Two Tone Decorating Services 47

Plasterer - B&D Plastering 43

Plumber

K J Barton Plumbing & Heating 48
Low Cost Plumbing 46
Mayo's Heating & Plumbing 43
M J Harris Domestic Repairs 49
R H Plumbing 42
Stokes Plumbing Service 48

Repairs -

D-CR Domestic Appliance Repairs 46

Restaurant/Hotel

Roofing -

Rooftech 42
Vizards Roofing 46

Rubbish Clearance

2

Schools/Schooling

Abbeywood Community 20,29
Meadowbrook Primary 26
Olympus Trust Schools 28-29
Patchway Community 27
Stoke Lodge Primary 4
Winterbourne Academy 5

Security - Technisys

45

Sewing / Alterations -

Medway Designs 34

Shopping -

Willow Brook Centre 6-7

Your Village Shop 7

Solicitors -

AMD Solicitors 33

Wards 22

Storage

Avonmouth Space Program 31

Tiling -

Paul Bartley Ceramic Tiling 44

Trades & Services - 40-52

Tree Surgeon

Collins Trees Services 49

Front Row Fencing 48

TV & Aerials

A1 Aerials 48

Aerial Man - Dan Grace 3,47

M D Aerials 46

Window Cleaning -

Majestic Window Cleaning 49

No painting or repairs for 25 years? It must be a ColourFence!



Guaranteed not to warp, crack, shrink, rot or peel*

With the warmer weather arriving, there's always plenty to do in the garden. However, with ColourFence, one of the most tedious, time-consuming jobs disappears overnight. Not just for 2021 but for the next 25 years! That's because there's no need to paint or repair ColourFence. It's guaranteed not to warp, crack, shrink, rot or peel for the next 25 years. Making it one of the world's best maintenance-free fences. And, unlike other fences, ColourFence can withstand wind speeds of up to 130mph. There's a choice of colours to harmonise and enhance your garden's design. You'll find our prices surprisingly competitive too. **To see the full product range, call us today and find out why it makes sense to choose ColourFence.**

*Hose down occasionally - terms & conditions apply.



- Guaranteed* not to warp, crack, shrink, rot or peel
- Withstands wind gusts of up to 130mph
- No painting or repairs for 25 years
- Create your look with a choice of colours, designs and sizes
- No risk professional installation

**CALL
NOW!**

To see our full range of colours, designs and get a **FREE** 'no-obligation' quote - **CALL**

0117 259 1789

colourfencebristol.co.uk

**MADE IN
BRITAIN**





Nuffield Health Fitness & Wellbeing Centre




Stoke Gifford



OUR MODERN FAMILY CLUB IS MORE THAN JUST A GYM

Recently upgraded with state-of-the-art Technogym equipment, we offer dedicated training areas, exciting new boutique classes and versatile equipment for all fitness levels. We also offer a range of fitness classes for children aged between 8-15 and a crèche for children aged from 6 weeks to 12 years.



Book a tour: 0117 974 9740



Nuffield
Health